

# Self Priming Centrifugal Pump

**Super  
T SERIES**

VARIOUS PATENTS APPLY

## Model T6B60S-B

### Size 6" x 6"



#### PUMP SPECIFICATIONS

**Size:** 6" x 6" (152 mm x 152 mm) NPT - Female.

**Casing:** Gray Iron 30.

Maximum Operating Pressure 81 psi (558 kPa).\*

**Semi-Open Type, Six Vane Impeller:** Ductile Iron 65-45-12.

Handles 1 1/4" (31,7 mm) Diameter Spherical Solids.

**Impeller Shaft:** Alloy Steel 4150.

**Shaft Sleeve:** Alloy Steel 4130.

**Replaceable Wear Plate:** Gray Iron 30.

**Removable Adjustable Cover Plate:** Gray Iron 30; 53 lbs. (24 kg).

**Flap Valve:** Neoprene w/Nylon and Steel Reinforcing.

**Seal Plate:** Gray Iron 30.

**Bearing Housing:** Gray Iron 30.

**Radial Bearing:** Open Single Row Ball.

**Thrust Bearing:** Open Double Row Ball.

**Bearing and Seal Cavity Lubrication:** SAE 30 Non-Detergent Oil.

**Flanges:** Gray Iron 30.

**Gaskets:** Buna-N, Compressed Synthetic Fibers, PTFE, Vegetable Fiber, Cork, and Rubber.

**O-Rings:** Buna-N.

**Hardware:** Standard Plated Steel.

**Brass Pressure Relief Valve.**

**Bearing and Seal Cavity Oil Level Sight Gauges.**

**Optional Equipment:** Stainless Steel 316 Pressure Relief

Valve. Metal Bellows Seal. Automatic Air Release Valve.

120V/240V Casing Heater. High Pump Temperature

Shutdown Kit. G-R Hard Iron Casing.

Gray Iron 30 Suction and Discharge Spool Flanges:

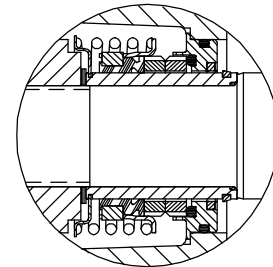
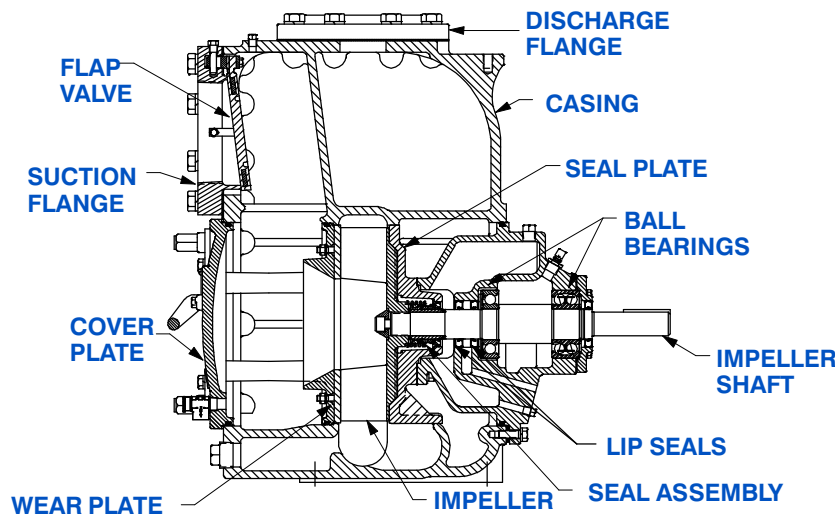
6" ASA (**Specify Model T6B60S-B /F**).

150 mm DIN 2527 (PN16) (**Specify Model T6B60S-B /FM**).

*\*Consult Factory for Applications Exceeding  
Maximum Pressure and/or Temperature Indicated.*



Shown with Optional Suction & Discharge Spool Flanges (Available in ASA or DIN Standard Sizes).



#### SEAL DETAIL

Cartridge Type, Mechanical, Oil-Lubricated, Double Floating, Self-Aligning. Silicon Carbide Rotating and Stationary Faces. Stainless Steel 316 Stationary Seat. Fluorocarbon Elastomers (DuPont Viton® or Equivalent). Stainless Steel 18-8 Cage and Spring. Maximum Temperature of Liquid Pumped, 160°F (71°C).\*



## GORMAN-RUPP PUMPS

www.grpumps.com

Specifications Subject to Change Without Notice

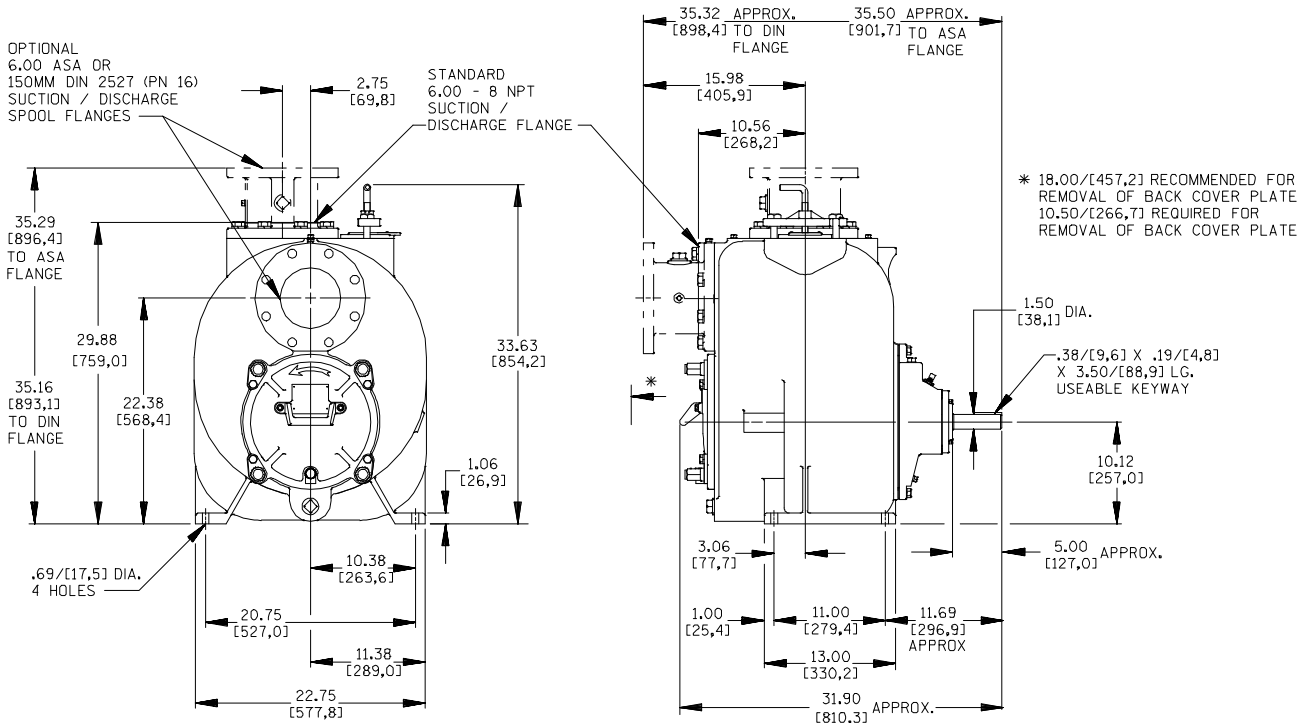
Printed in U.S.A.

# Specification Data

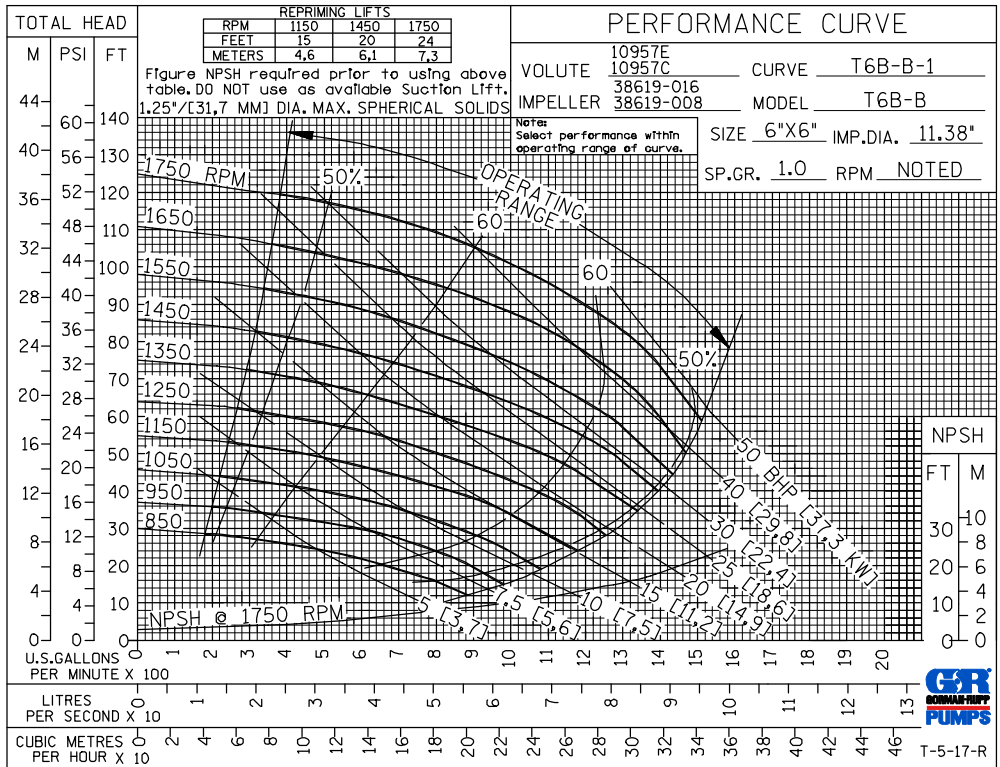
## APPROXIMATE DIMENSIONS and WEIGHTS

**NET WEIGHT:** 855 LBS. (388 KG.)\*  
**SHIPPING WEIGHT:** 910 LBS. (413 KG.)\*  
**EXPORT CRATE:** 32.5 CU. FT. (0.92 CU. M.)  
**\*ADD 25 LBS. (11,3 KG.) W/EACH SPOOL FLANGE**

SECTION 55, PAGE 2260C



OPTIONAL ASA OR DIN STANDARD SUCTION & DISCHARGE SPOOL FLANGES AVAILABLE

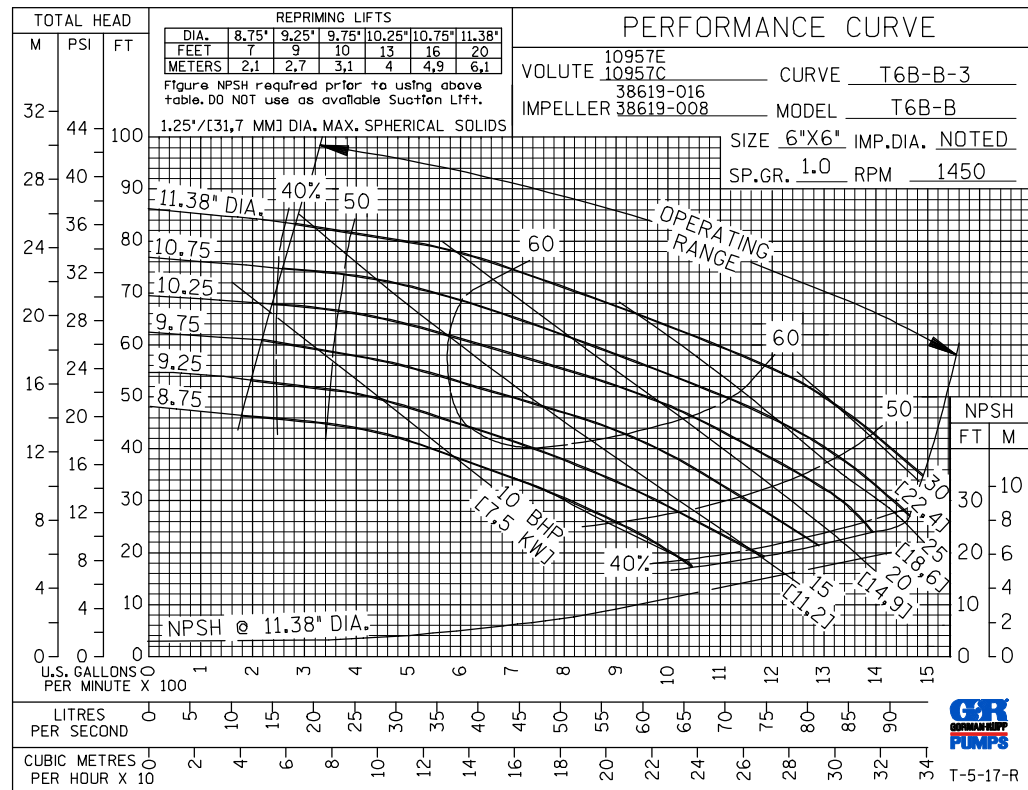
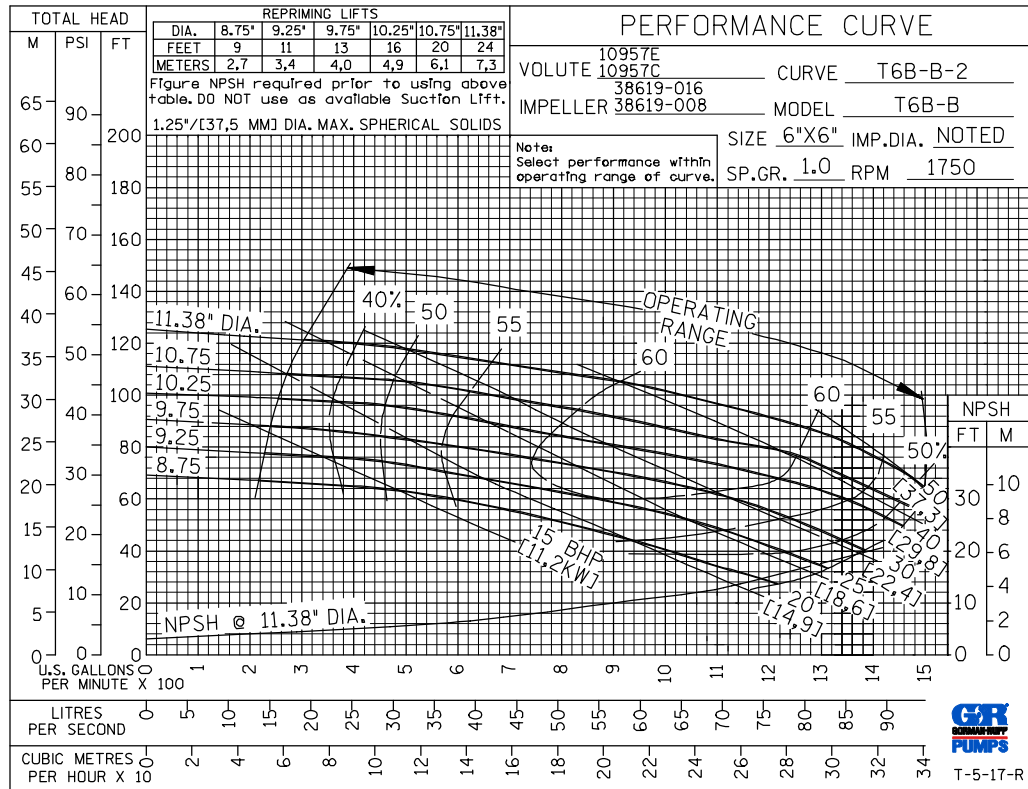


# GORMAN-RUPP PUMPS

www.grpumps.com

Specifications Subject to Change Without Notice

Printed in U.S.A.

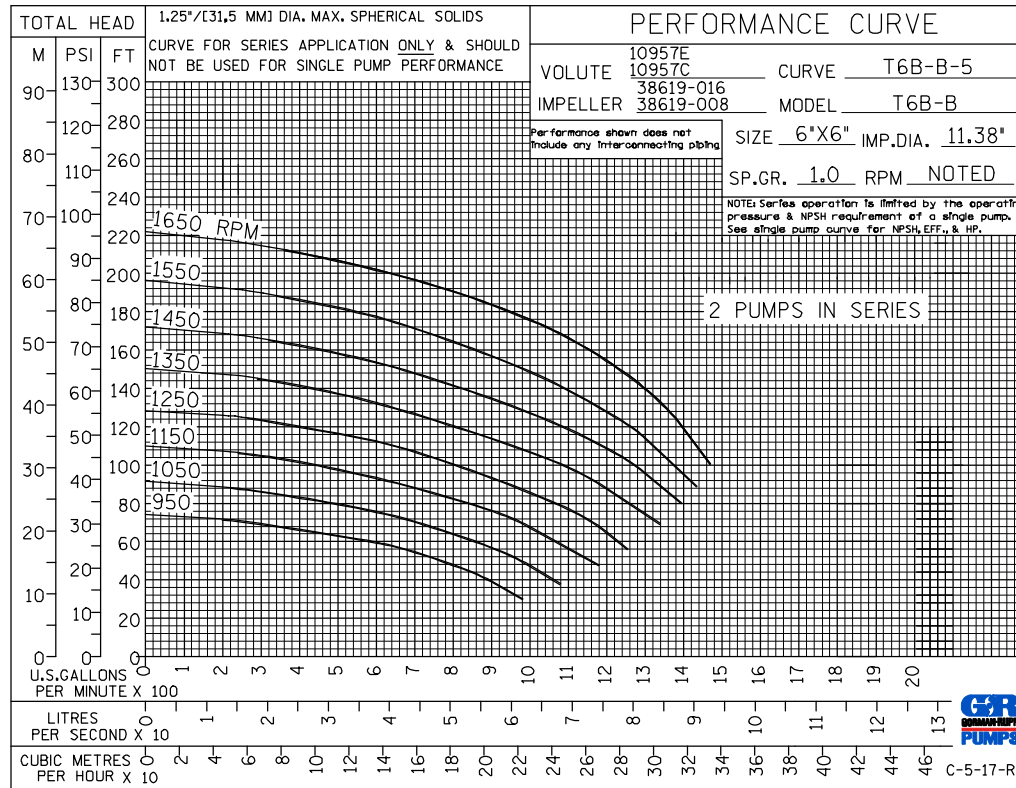
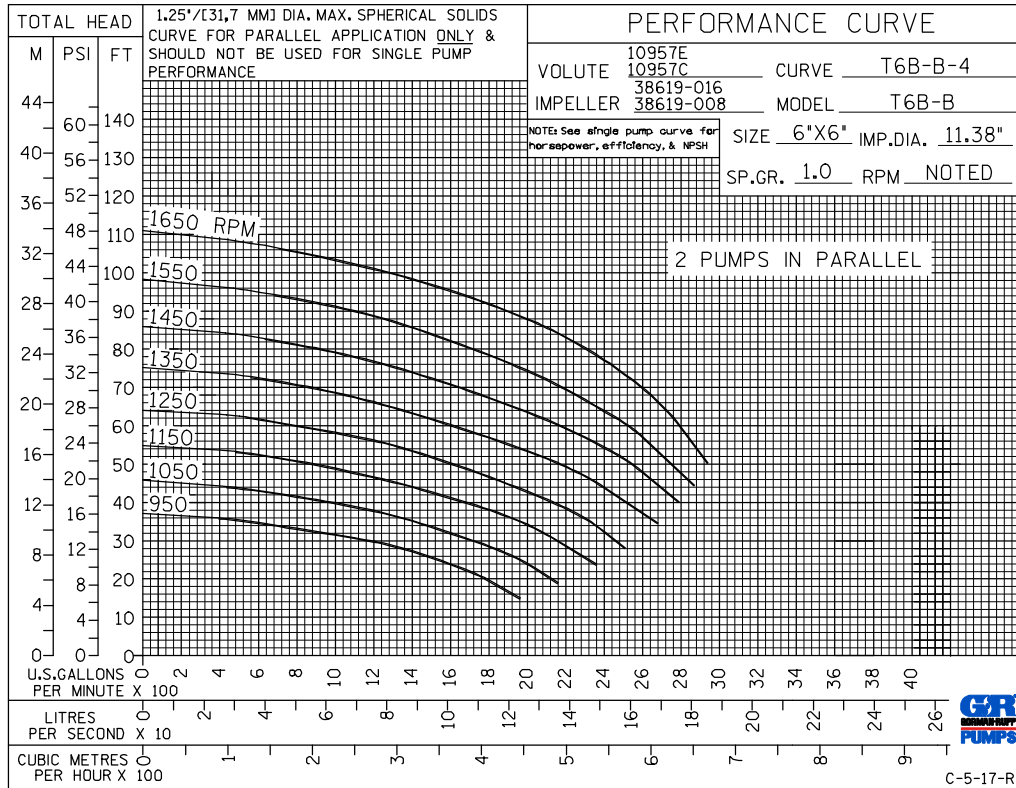


GORMAN-RUPP PUMPS

www.grpumps.com

Specifications Subject to Change Without Notice

Printed in U.S.A.



# GORMAN-RUPP PUMPS

www.grpumps.com

Specifications Subject to Change Without Notice

Printed in U.S.A.