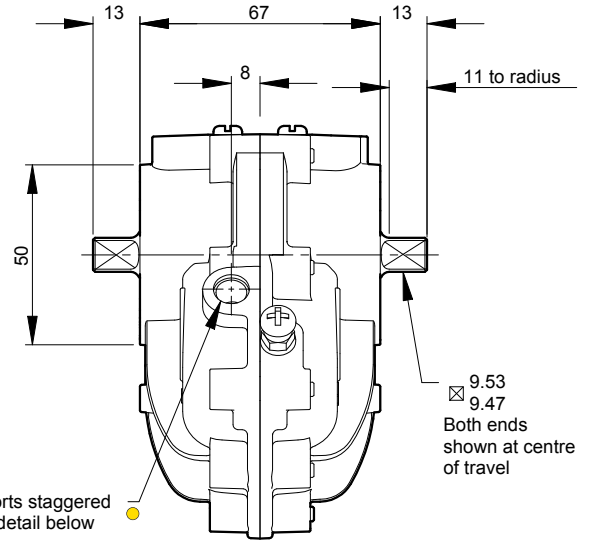
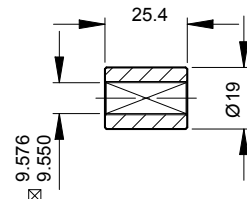


Model 05



Standard Coupling
(supplied with actuator
weight 0.09 lbs/0.04 kg)



Specification

Output Torque

440 lbf ins/50 Nm
at 100 psi/7 bar

Angle of Travel (adjustable)

84° - 100°
(restricted travel
versions available)

Displaced Volume

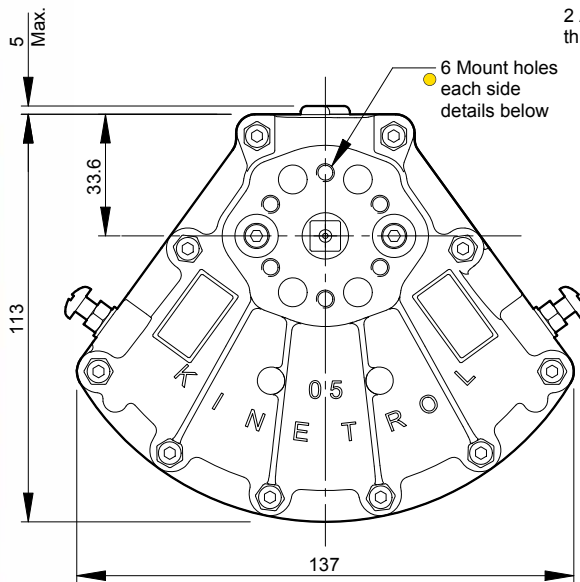
6.9 in³/113 cm³

Finish

Epoxy stove enamel

Weight

2.73 lb/1.24 kg
(excluding coupling)



Air Port/Mount Hole Details

Model	Air Ports	Mount Holes
054-100	G ¹ / ₈	6 x M5 x 10 deep on 34.9 PCD
057-100	1/ ₈ NPT	6 x 10-24 UNC x 0.39" deep on 1.375" PCD

Visual Red Indicator supplied as standard



KINETROL