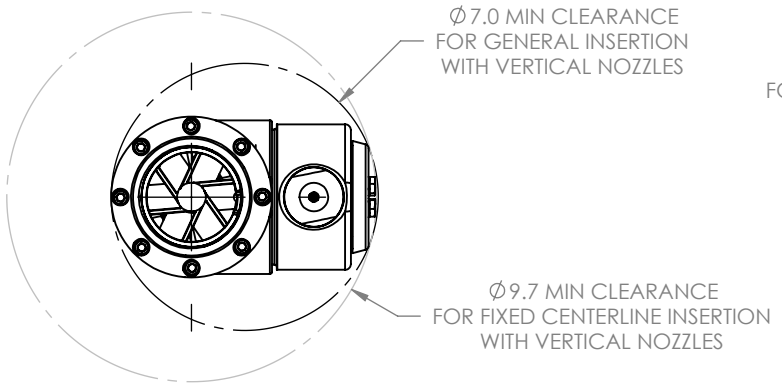
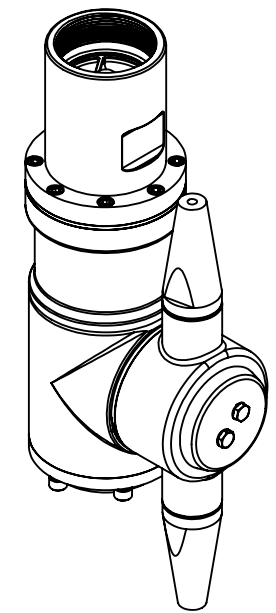
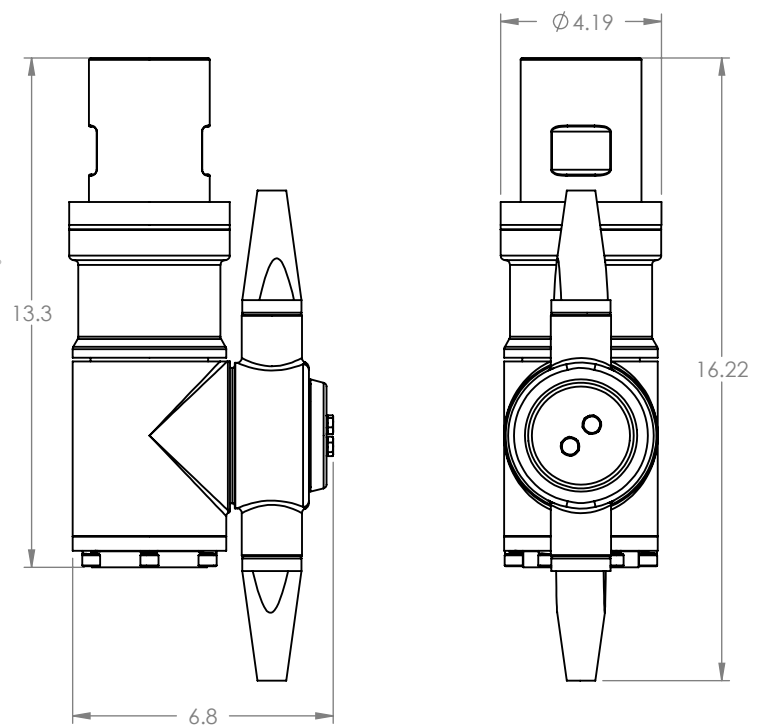
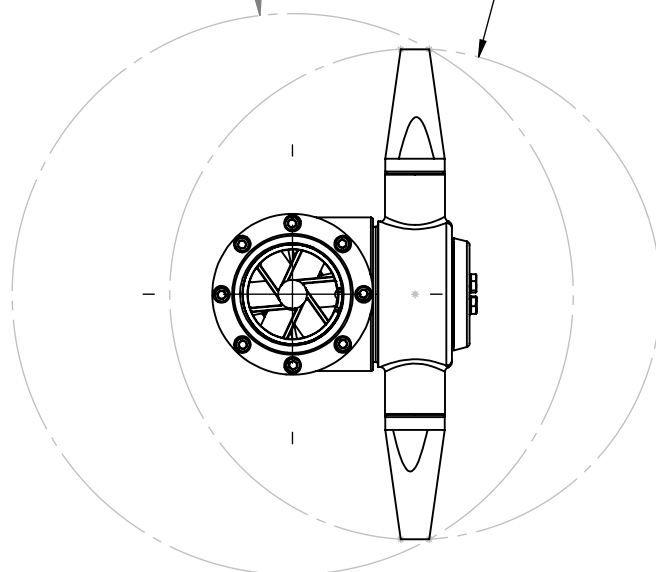


1 2 3 4 5 6



$\phi 14.7$  MIN CLEARANCE FOR FIXED CENTERLINE INSERTION WITH HORIZONTAL NOZZLES  
 $\phi 12.8$  MIN CLEARANCE FOR GENERAL INSERTION WITH HORIZONTAL NOZZLES



A  
B  
C

**NOTES:**  
 -MAT'L: 316 SS MAIN BODY PARTS, 18-8 SS FASTENERS, PLASTICS & ELASTOMERS  
 -WEIGHT: 26 LBS  
 -INLET: 2-1/2" NPT, 2-1/2" BSP  
 -FLOW RANGE: 30-320 GPM (115-1210 LPM)  
 -PRESSURE RANGE:  
   -WORKING: 40-300 PSI (3-20 BAR)  
   -RECOMMENDED: 50-200 PSI (3.4-13.8 BAR)  
 -CYCLE TIME: 8-30+ MINUTES  
 -INSERTION CLEARANCE: REFER TO VIEWS ABOVE

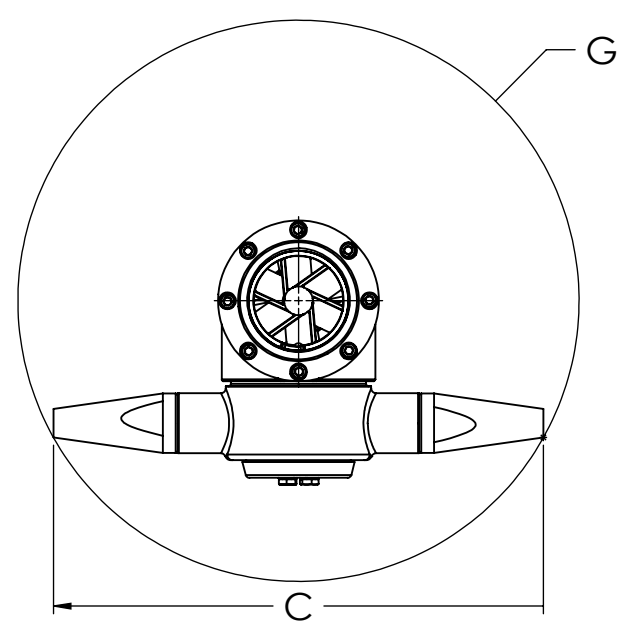
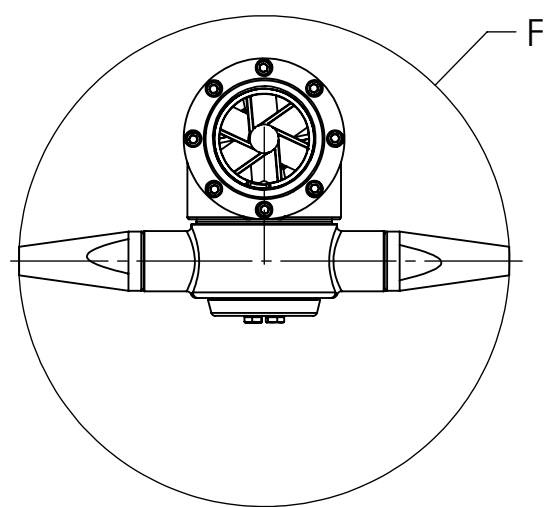
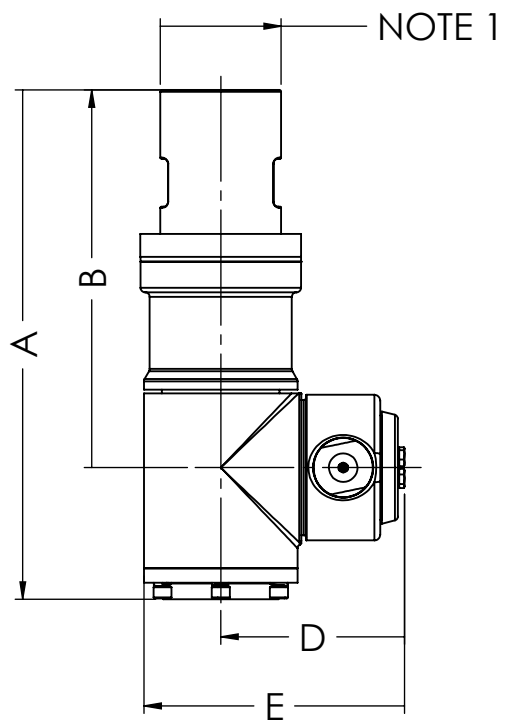
REVISIONS			
REV.	ECN/DESCRIPTION	DATE	APR
1	NEW RELEASE	4/4/2019	AW

THIS DRAWING IS THE PROPERTY OF ALFA LAVAL REPRODUCTIONS AND USE OTHER THAN BORROWER'S AGREEMENT IS PROHIBITED. THIS DOCUMENT SHALL NOT BE LENT OR DISPOSED OF DIRECTLY OR INDIRECTLY NOR USED FOR ANY PURPOSE OTHER THAN THAT WHICH IS SPECIFICALLY FURNISHED.

DIMENSIONS ARE IN INCHES DIMENSIONS INTERPRETED PER ASME 14.5M-1994	
TOLERANCES:	
X	$\pm 1/16$
.XX	$\pm 0.010$
.XXX	$\pm 0.005$
ANGLE	$\pm 0.5^\circ$
DRAWN BY	DRAWN DATE
AW	4APR2019
APPROVED BY	APPROVED DATE
AW	4APR2019
SIZE	SCALE
A	1:5
FINISH	MATERIAL
128 Ra - 32 Rd	SEE NOTES

Alfa Laval	
1	
DESCRIPTION	
ALFA LAVAL GJ 18 INSTALLATION CUTSHEET	
DWG. NO.	REV
GJ 18-1000-CS	1
	SHEET
	1/2

D



	A	B	C	D	E	F	G
in	13.27	9.84	12.76	4.84	6.84	12.78	14.61
mm	337	250	324	123	174	325	371

NOTE 1: 2 1/2" NPT OR 2 1/2" BSP

THIS DRAWING IS THE PROPERTY OF ALFA LAVAL REPRODUCTIONS AND USE OTHER THAN BORROWER'S AGREEMENT IS PROHIBITED. THIS DOCUMENT SHALL NOT BE LENT OR DISPOSED OF DIRECTLY OR INDIRECTLY NOR USED FOR ANY PURPOSE OTHER THAN THAT WHICH IS SPECIFICALLY FURNISHED.

DIMENSIONS ARE IN INCHES DIMENSIONS INTERPRETED PER ASME 14.5M-1994  
 TOLERANCES:  
 .X ±1/16  
 .XX ±0.010  
 .XXX ±0.005  
 ANGLE ±0.5°

DRAWN BY  
AW

APPROVED BY  
AW

SIZE  
A

SCALE  
1:5

FINISH  
128 Ra - 32 Rd

MATERIAL  
SEE NOTES

Alfa Laval  
 604 JEFFERS CIRCLE  
 EXTON, PA 19341

DESCRIPTION  
 ALFA LAVAL GJ 18  
 INSTALLATION CUTSHEET

DWG. NO.  
 GJ 18-1000-CS

REV  
1

SHEET  
2/2