



Liqui-Flux[®]
FILTRATION

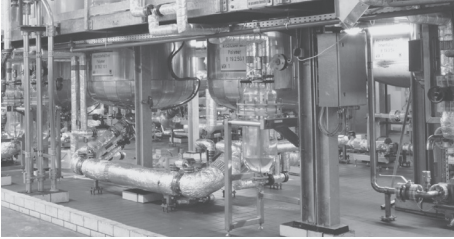
W-SERIES
Ultrafiltration Modules

3M

MEMBRANA
Now proudly part of 3M

3M

A Market Leader in Membrane Technology



3M has been a technological leader in membrane development and manufacturing for over 40 years. Our experience spans over 20 years of module development and manufacturing. Employing more than 500 people, 3M's large scale production facilities ensure the highest level of quality.

With an annual output of several million SQM per year, 3M is one of the largest membrane manufacturers in the world.



Liqui-Cel® - Product Family

Extensive R&D activities and facilities promote continued development and advancement of 3M products and technologies.

We offer our technical know-how and experience to support our customers from the decision making process through the start-up and optimization steps of integrating Liqui-Flux® modules into the end user's process.

Our primary company-wide product focus includes:

- Hollow Fiber and Flat Sheet Membranes for medical applications
- Flat Sheet Microfiltration Membranes for process filtration
- Liqui-Cel® Membrane Contactors for degassing
- Liqui-Flux® Microfiltration Modules for beverage clarification
- Liqui-Flux® Ultrafiltration Modules for water treatment

Liqui-Flux® Module “Economy and Reliability in Ultrafiltration”

3M manufactures one of the largest UF modules of its kind. The new Liqui-Flux® Filtration module uses cutting-edge technology for inside-out ultrafiltration with large effective membrane area.

The durable module design and the Variable Connect Concept - VCC represent an advancement in ultrafiltration technology today. In addition, the Variable Connect Concept provides several options for assembling the modules.

According to the system size and application type, 3M offers several product types and sizes.

Application Areas for Liqui-Flux® Water Modules:

- Drinking water treatment
- Pre-treatment to reverse osmosis
- Process water filtration
- Waste water polishing



Waste Water Re-use | 2250m³/h



Pre-treatment to Reverse Osmosis | 540m³/h



Waste Water Re-use | 1000m³/h



Water Bottling | 100m³/h



Process Water Power Plant | 240m³/h



Drinking Water Treatment | 180m³/h

Sustainable Module Design

Ultrafiltration Modules

A structured membrane arrangement inside a 12-inch housing leads to well defined liquid flow hydrodynamics. 3M has designed this high quality Liqui-Flux® module for long-term operation.

UltraPES membrane

„Superior Permeability and Strength“

- Robust asymmetric 3-layer structure
- Narrow pore size distribution
- Excellent permeability
- Reduced fouling potential
- High temperature and chemical resistance (pH 1 – 13)

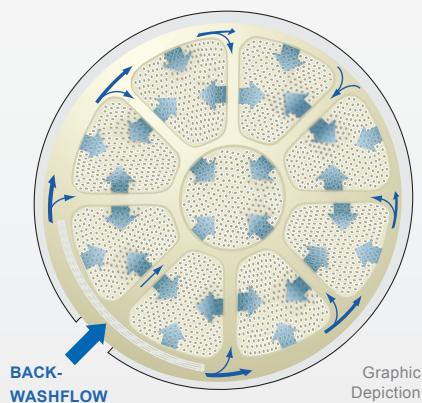
Multifiber P.E.T.™ Feature

“Sophisticated Membrane Support”

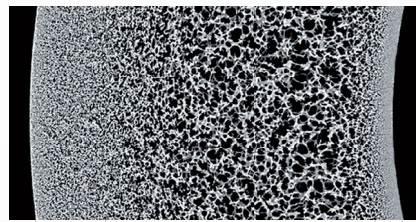
UltraPES hollow fiber membranes are stabilized by 3M's patented Multifiber P.E.T.™ technology where PET yarn is twisted around and potted with the hollow fibers.

The Multifiber P.E.T. technology provides excellent mechanical support to the membrane and ensures long-term stability.

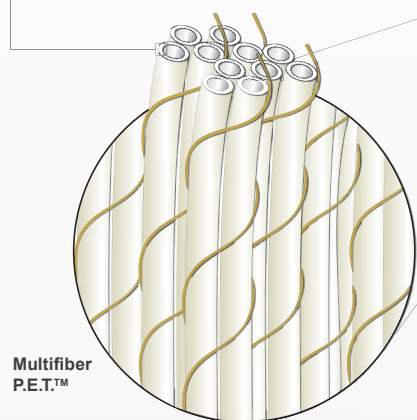
Even Flow Distribution Promotes Efficient Backwash “Controlled Hydrodynamics”



Distinctive 3-layer structure



Protection layer Support layer Separation layer

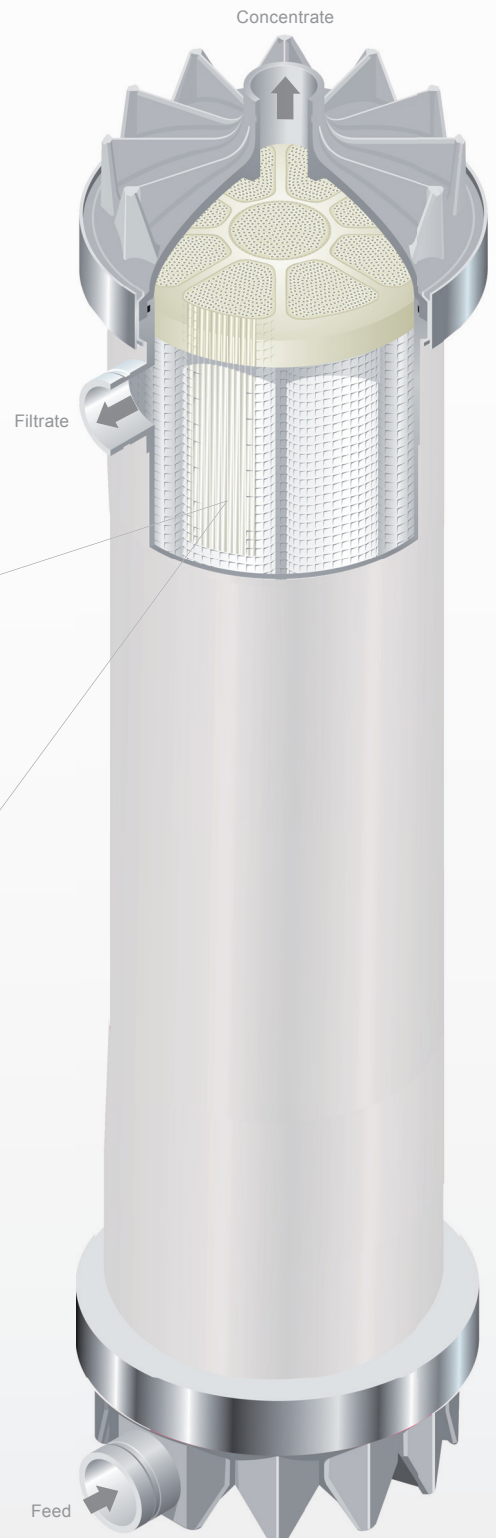


Graphic Depiction

The special module design is optimized for favorable hydrodynamic conditions during the backwash procedure.

- The introduction of backwash water through a narrowing annular channel ensures a uniform pressure distribution. This leads to excellent physical cleaning performance.

- Without O-ring sealing to separate the feed from the filtrate side, Liqui-Flux® ultrafiltration modules reduce the potential for microbiological cross-contamination.





Warranty, Limited Remedy, and Disclaimer: Many factors beyond 3M's control and uniquely within user's knowledge and control can affect the use and performance of a 3M product in a particular application. User is solely responsible for evaluating the 3M product and determining whether it is fit for a particular purpose and suitable for user's method of application. Unless an additional warranty is specifically stated on the applicable 3M product packaging or product literature, 3M warrants that each 3M product meets the applicable 3M product specification at the time 3M ships the product. 3M MAKES NO OTHER WARRANTIES OR CONDITIONS, EXPRESS OR IMPLIED, INCLUDING, BUT NOT LIMITED TO, ANY IMPLIED WARRANTY OR CONDITION OF MERCHANTABILITY OR FITNESS FOR A PARTICULAR PURPOSE OR ANY IMPLIED WARRANTY OR CONDITION ARISING OUT OF A COURSE OF DEALING, CUSTOM OR USAGE OF TRADE. If the 3M product does not conform to this warranty, then the sole and exclusive remedy is, at 3M's option, replacement of the 3M product or refund of the purchase price.

Limitation of Liability: Except where prohibited by law, 3M will not be liable for any loss or damage arising from the 3M product, whether direct, indirect, special, incidental or consequential, regardless of the legal theory asserted, including warranty, contract, negligence or strict liability.

3M, Membrana, Liqui-Cel, Liqui-Flux and P.E.T. are trademarks of 3M Company.

© 2016 3M Company. All rights reserved.

LFW_BRO_EN_Rev7

**Membranes Business Unit
Industrial Business Group**

13840 South Lakes Drive
Charlotte, NC 28273 | USA
Phone: +1 704 587 8888
Fax: +1 704 587 8610

**3M Deutschland GmbH
Industrial Business Group**

Öhder Straße 28
42289 Wuppertal | Germany
Phone: +49 202 6099 224
Fax: +49 202 6099 750

**3M China Ltd.
Shanghai General Office**

8 Xingyi Road, 36/F Maxdo Center
Shanghai 200336 | China
Phone: +86 62 753 535
Fax: +86 21 62 952 450

MEMBRANA
Now proudly part of 3M

www.liqui-flux.com
www.membrana.com