

GORMAN-RUPP PRODUCTS

MUNICIPAL

WASTEWATER TREATMENT



PUMPS FOR MUNICIPAL APPLICATIONS

Gorman-Rupp provides wastewater-handling solutions for all your treatment system's pumping needs.



PROVIDING QUALITY PUMPING EQUIPMENT FOR OVER 80 YEARS



A History of Solving Wastewater Challenges

In 1933, Gorman-Rupp developed its first self-priming centrifugal pump to provide our customers with a durable, reliable pump that could perform in a challenging environment. Since then, we've worked closely with our customers around the world to meet their wastewater treatment needs.

With over a million Gorman-Rupp pumps and pump stations installed to date, we have the experience to intimately understand municipal pumping requirements. Our worldwide network of distributors has experienced industry professionals on staff, giving us firsthand knowledge of your most pressing challenges.

We help you solve these challenges and make the most of your limited resources by designing our pumps, and stations, to deliver decades of trouble-free performance. When you choose Gorman-Rupp for your municipal pumping applications, you'll experience some of the lowest lifecycle costs in the industry and benefit from minimal service interruptions. And you'll enjoy one of the highest customer satisfaction ratings in the industry—guaranteed.



State-of-the-Art Equipment Built in State-of-the-Art Facilities

As the world's leading manufacturer of pumps and pumping systems, Gorman-Rupp offers you access to one of the largest and highest quality lines of industrial pumps available in the market place today.

We maintain close to one million square feet of the most modern manufacturing, testing and warehousing facilities in the world. Our experienced engineers take advantage of the latest technologies and innovations to custom-design, manufacture and assemble our products.

We perform rigorous testing based on Hydraulic Institute Standards and test to customers' actual operating conditions in our one-of-a-kind testing facility guaranteeing innovative, superior-quality products that are ready to tackle your toughest jobs.

To ensure you get the right equipment for your requirements, Gorman-Rupp partners with a worldwide network of distribution and provides them with the best and most extensive training. Gorman-Rupp distributors will work hand-in-hand with you to recommend, customize and specify equipment. And they are always available should you ever require service assistance.



10" Super T Series® return activated sludge (RAS) pumps

OUR MUNICIPAL LINE OF PRODUCTS INCLUDES:

Self-Priming Centrifugal Pumps

Gorman-Rupp self-priming centrifugal pumps are easy to install and easy to service. Because they're self-priming, they can be mounted high and dry at floor level, with only the suction line down in the liquid. If service or maintenance is required it can be completed quickly and easily. There are no long drive shafts to install and align. And, there is never any need for service personnel to enter the sump.

Standard Centrifugal Pumps

Gorman-Rupp offers hundreds of models of high volume, high pressure centrifugal pumps. These high efficiency pumps have few moving parts, so maintenance and service are minimal.

Submersible Pumps

Gorman-Rupp submersible pumps are designed for efficient operation in both dewatering and solids-handling applications, while remaining out-of-sight, beneath the fluid's surface. Available with both electric and hydraulic-driven motors and including versions rated for standard and hazardous locations, there are models available to meet most pumping requirements.

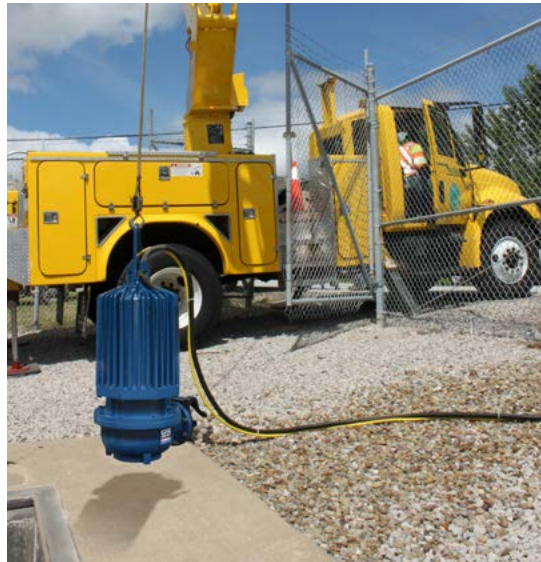
ReliaSource® Lift Stations

Gorman-Rupp engineers a full line of lift stations, which are 100% Gorman-Rupp custom engineered and manufactured. All Gorman-Rupp pump packages include an extensive selection of pumps, motors, controls, valves and accessories and can be housed in durable fiberglass enclosures. The stations come pretested and ready for immediate hookup to power and piping. And, every ReliaSource® lift station is backed by an industry leading 60-month warranty, guaranteed.

Applications

- Influent Equalization Pumps
- Lift Stations
- Grit Pumps
- Primary Sludge Pumps
- RAS Pumps
- Utility Water (Non-Potable) Pumps
- Effluent Pumps
- Scum Pumps
- WAS Pumps
- Supernatant Recirculation Pumps
- Dewatering Feed Pumps
- Sludge Loading Pumps

INDUSTRY-LEADING SUPPORT AND WARRANTY



SF Series® pump lowered into the wetwell of a lift station



Super T Series® pumps in the basement of a sludge loading application

Industry-Leading 60-Month Warranty

Gorman-Rupp has you covered with a 60-month warranty on all:

- ReliaSource® Lift Stations
- Super T Series® Pumps
- Ultra V Series® Pumps
- UltraMate®

Gorman-Rupp stands behind the quality of our pumps to ensure they meet your requirements for the long haul. To maintain industry-leading client satisfaction well beyond product installation, we offer a variety of services to meet your needs, including:

Training

We provide in-depth training seminars for service personnel in our one-of-a-kind training facility. You'll learn about our products, technologies and how to service your equipment.

Service

Because our equipment is designed for minimum maintenance and ease of service, it's simple and cost-effective for your wastewater treatment plant to perform their own service, and only minimal resources are required to keep our pumps and pump packages operating at peak performance.

Our worldwide distribution network is available for service questions and support as well as warranty work. Should you wish to outsource service, our distribution network can provide ongoing service for your pump and/or pump package.

Fast Parts Service

When you need a replacement part for any of our products, you'll have it fast. With the largest parts and pump inventory in the industry at our disposal, we fill and ship most parts orders within 24 hours.

Industry-Leading Warranty

The warranties on Gorman-Rupp products are some of the best in the industry. Because of our quality manufacturing processes and our rigorous product testing, we have confidence in the quality of our products. Thanks to our warranties, you can too. Gorman-Rupp has you covered with warranties up to 60-months. Visit www.GRpumps.com/warranty for specific warranty information.

GORMAN-RUPP PUMPS: THE LONGEST LASTING PUMPS IN THE BUSINESS

Gorman-Rupp sets the industry standard in heavy duty solids- and limited solids-handling pumps for all your wastewater treatment pumping needs. Every pump is factory-tested for long lasting, trouble-free use.

We have an experienced staff of engineers dedicated to the design and construction of the most efficient and serviceable pumps in the industry. Our representatives are trained to help you select the proper pumps and related equipment for your specific application. They are also able to offer suggestions on maintaining your equipment for maximum performance.

Self-Priming Centrifugal Pumps



Ultra V Series® Heavy-Duty Solids-Handling Pumps

Sizes: 3" (75 mm) - 6" (150 mm)
Max Capacity: 1900 GPM (119.9 lps)
Max Head: 168' (51.2 m)
Max Solids: 3" (76.2 mm)



10 Series® Heavy-Duty Solids-Handling Pumps

Size: 1.5" (38 mm) - 12" (300 mm)
Max Capacity: 6700 GPM (422.7 lps)
Max Head: 130' (39.6 m)
Max Solids: 3" (76.2 mm)



Ultra V Series® w/Ultramate® Heavy-Duty Solids-Handling Pumps

Sizes: 3" (75 mm) - 6" (150 mm)
Max Capacity: 1900 GPM (119.9 lps)
Max Head: 325' (99.1 m)
Max Solids: 3" (76.2 mm)



80 Series® Heavy-Duty Solids-Handling Pumps

Size: 1.25" (30 mm) - 10" (250 mm)
Max Capacity: 2800 GPM (176.7 lps)
Max Head: 205' (62.5 m)
Max Solids: 2.5" (63.5 mm)



Super T Series® Heavy-Duty Solids-Handling Pumps

Sizes: 2" (50 mm) - 10" (250 mm)
Max Capacity: 3400 GPM (214.5 lps)
Max Head: 130' (39.6 m)
Max Solids: 3" (76.2 mm)
2" available in T Series only



Super U Series® Limited Solids-Handling Pumps

Sizes: 3" (75 mm) - 6" (150 mm)
Max Capacity: 1500 GPM (94.6 lps)
Max Head: 207' (63.1 m)
Max Solids: 1.25" (31.8 mm)

Standard Centrifugal Pumps



VG & VGH Series® High Efficiency Pumps

Size: 1.25" (30 mm) to 8" (200 mm)
Max Capacity: 4900 GPM (309.1 lps)
Max Head: 500' (152.4 m)
Max Solids: 1.38" (35.1 mm)

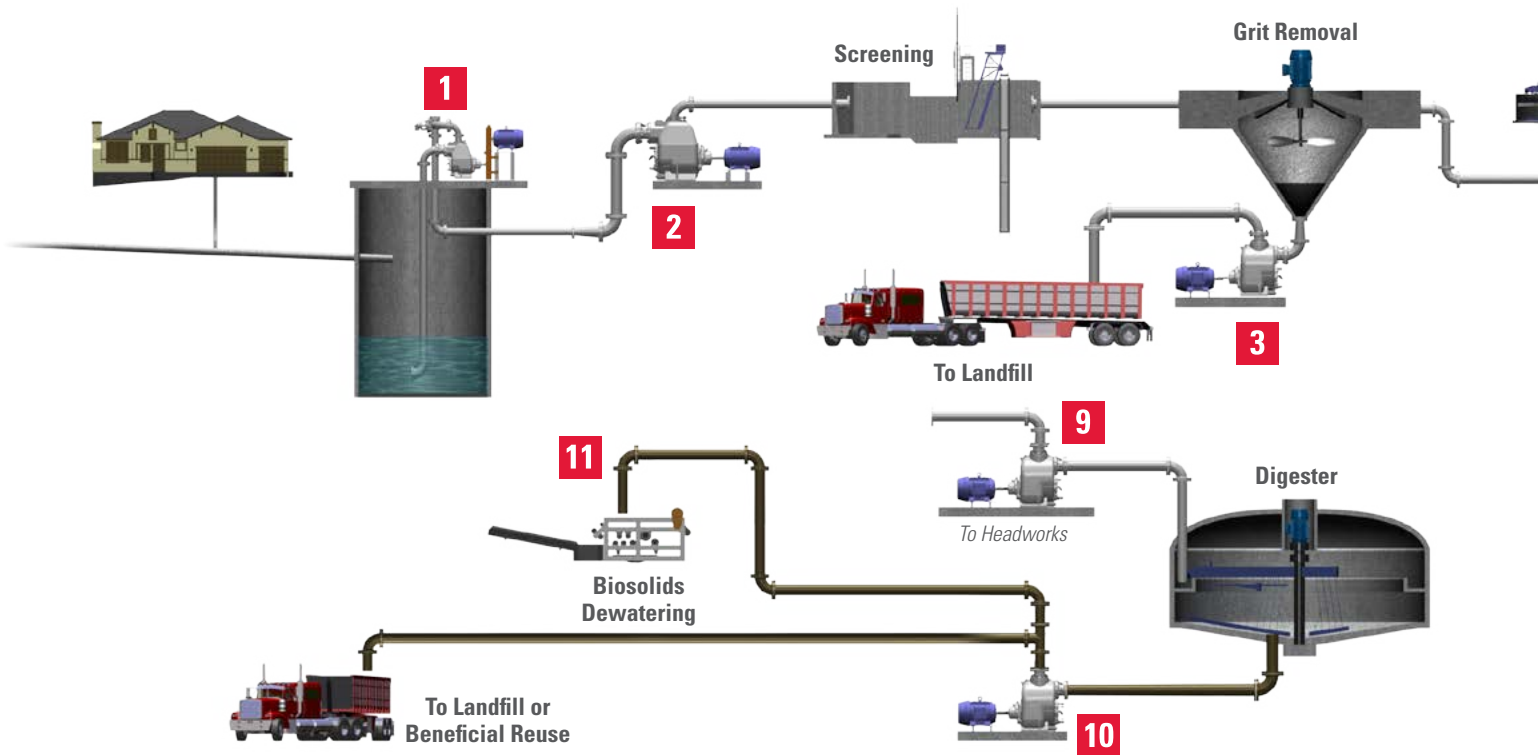
Submersible Centrifugal Pumps



SF Series® Solids-Handling Pumps

Sizes: 3" (75 mm) - 8" (200 mm)
Max Capacity: 3400 GPM (214.5 lps)
Max Head: 170' (51.8 m)
Max Solids: 3" (76.2 mm)

MUNICIPAL WASTEWATER TREATMENT PUMPING



Ultra V Series® influent equalization pumps



Super T Series® grit pump

1 Influent Pump Station

ReliaSource® 8x9 Above-Ground
 Pump Size: 3" (75 mm) - 8" (200 mm)
 Max Capacity: 2600 GPM (164.0 lps)
 Max Head: 160' (48.8 m)
 Max Solids: 3" (76.2 mm)

ReliaSource® 8x12 Above-Ground
 Pump Size: 3" (75 mm) - 8" (200 mm)
 Max Capacity: 2600 GPM (164.0 lps)
 Max Head: 320' (97.5 m)
 Max Solids: 3" (76.2 mm)

ReliaSource® 6x6 Above-Ground
 Pump Size: 2" (50 mm) - 6" (150 mm)
 Max Capacity: 1300 GPM (82.0 lps)
 Max Head: 150' (45.7 m)
 Max Solids: 3" (76.2 mm)

ReliaSource® 6X6T Above-Ground
 Pump Size: 3" (75 mm) - 6" (150 mm)
 Max Capacity: 1475 GPM (93.1 lps)
 Max Head: 160' (48.8 m)
 Max Solids: 3" (76.2 mm)

ReliaSource® 7x10 Above-Ground
 Pump Size: 3" (75 mm) - 8" (200 mm)
 Max Capacity: 2500 GPM (157.7 lps)
 Max Head: 160' (48.8 m)
 Max Solids: 3" (76.2 mm)

ReliaSource® Below-Ground
 Pump Size: 3" (75 mm) - 10" (250 mm)
 Max Capacity: 3300 GPM (208.2 lps)
 Max Head: 155' (47.2 m)
 Max Solids: 3" (76.2 mm)
 Station Sizes: 7'6" (2.3 m) and 10' (3.1 m)

ReliaSource® Above-Ground Submersible Valve Package (ASVP)
 Pump Size: 3" (75 mm) - 6" (150 mm)
 Max Capacity: 1600 GPM (100.9 lps)
 Max Head: 128' (47.2 m)
 Max Solids: 3" (76.2 mm)
 Horsepower: 3 HP to 50 HP

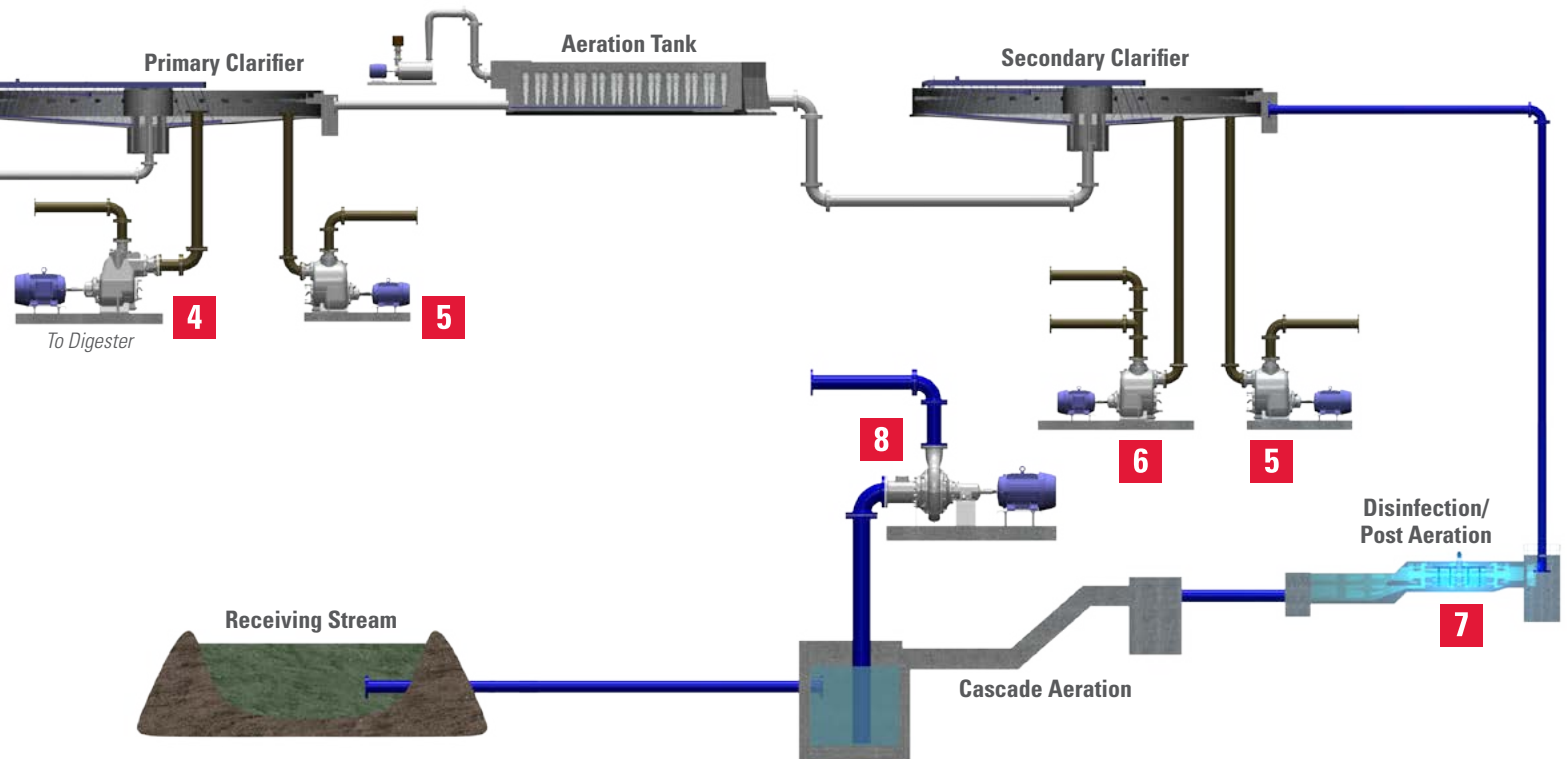
ReliaSource® Auto-Start
 Pump Size: 3" (75 mm) - 10" (250 mm)
 Max Capacity: 3400 GPM (214.5 lps)
 Max Head: 320' (97.5 m)
 Max Solids: 3" (76.2 mm)

ReliaSource® Base-Mounted
 Pump Size: 2" (50 mm) - 10" (250 mm)
 Max Capacity: 3400 GPM (214.5 lps)
 Max Head: 320' (97.5 m)
 Max Solids: 3" (76.2 mm)

2 Influent Equalization Pump

Ultra V Series® Self-Priming Pumps
 Super T Series® Self-Priming Pumps
 10 Series® Self-Priming Pumps
 SF Series® Submersible Pumps

APPLICATIONS



3 Grit Pump

Ultra V Series® Self-Priming Pumps
 Super T Series® Self-Priming Pumps
 10 Series® Self-Priming Pumps
 SF Series® Submersible Pumps

4 Primary Sludge Pump

Ultra V Series® Self-Priming Pumps
 Super T Series® Self-Priming Pumps
 10 Series® Self-Priming Pumps
 SF Series® Submersible Pumps

5 Scum Pump

Ultra V Series® Self-Priming Pumps
 Super T Series® Self-Priming Pumps
 SF Series® Submersible Pumps

6 RAS & WAS Pumps

Ultra V Series® Self-Priming Pumps
 Super T Series® Self-Priming Pumps
 10 Series® Self-Priming Pumps
 SF Series® Submersible Pumps

7 Effluent Pump

Ultra V Series® Self-Priming Pumps
 Super T Series® Self-Priming Pumps
 10 Series® Self-Priming Pumps
 Super U Series® Self-Priming Pumps
 SF Series® Submersible Pumps

8 Utility Water (Non-Potable) Pumps

Ultra V Series® Self-Priming Pumps
 Super T Series® Self-Priming Pumps
 80 Series® Self-Priming Pumps
 Super U Series® Self-Priming Pumps
 VG & VGH Series Standard Centrifugal Pumps

9 Supernatant Recirculation Pump

Ultra V Series® Self-Priming Pumps
 Super T Series® Self-Priming Pumps

10 Dewatering Feed Pump

Ultra V Series® Self-Priming Pumps
 Super T Series® Self-Priming Pumps

11 Sludge Loading Pump

Ultra V Series® Self-Priming Pumps
 Super T Series® Self-Priming Pumps



80 Series® utility water pumps



Super T Series® dewatering feed pumps

MUNICIPAL WASTEWATER TREATMENT SOLUTIONS DESIGNED WITH YOUR NEEDS IN MIND



★ Manufacturing Facilities

- **Distribution Centers**

Gorman-Rupp Pumps
Mansfield, Ohio, USA

Gorman-Rupp Europe
Leeuwarden, Netherlands

Gorman-Rupp Africa
Cape Town, South Africa
Durban, South Africa
Johannesburg, South Africa (Headquarters)

Distribution Centers
Bangkok, Thailand
Dubai, United Arab Emirates
Grand Prairie, Texas, USA
Leeuwarden, Netherlands
Sparks, Nevada, USA

Gorman-Rupp offers the expertise, the facilities, the proven equipment and the industry-leading product support to meet all your municipal pumping needs. For wastewater-handling systems that deliver maximum value and require minimal service, contact the experts at Gorman-Rupp today.



GORMAN-RUPP PUMPS
P.O. BOX 1217
MANSFIELD, OHIO 44901-1217 | USA
TEL: 419.755.1011 | FAX: 419.755.1251

GRPUMPS.COM



The Pump People®