



Fast, Sanitary Cleaning

Alfa Laval TJ SaniMega Rotary Spray Head

Application

The Toftejorg SaniMega rotary spray head provides a controlled rotating fan impact cleaning action. It is an automatic device with an optimised design for effective distribution of cleaning media. The Toftejorg SaniMega is suitable in processing and storage tanks ranging from 50 to 350 m³. It is particularly suited to vertical storage tanks in the food, brewing and other beverage industries where a scrubbing effect is needed to clean at the fill level.

The Toftejorg SaniMega rotary spray head provides a controlled rotating fan impact cleaning action. It is an automatic device with an optimised design for effective distribution of cleaning media. The Toftejorg SaniMega is suitable in processing and storage tanks ranging from 13,000 to 92,000 US gallons. It is particularly suited to vertical storage tanks in the food, brewing and other beverage industries where a scrubbing effect is needed to clean at the fill level.

Working principle

The flow of the cleaning media causes the gear unit to rotate the body of the cleaning head. The resulting fan impact jet provides a swirling action down the tank wall.



TECHNICAL DATA

Lubricant: Self-lubricating with the cleaning fluid

Effective cleaning radius: 3 m

Effective cleaning radius: 10 ft

Pressure

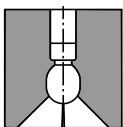
Working pressure: 2-4 bar

Working pressure: 29-58 PSI

Recommended pressure: 3 bar

Recommended pressure: 44 PSI

Spray Pattern



270° up

Standard Design

Downpipe length 1,200 mm. CIP inlet connection 2" clamp. Tank connection 3" clamp. As standard documentation, the Toftejorg SaniMega can be supplied with a "Declaration of Conformity" for material specifications.

Downpipe length 47.2 inch. Inlet connection as welding end 2" ISO $\varnothing 2 \times 0.05$ inch. Tank inlet as DIN Union DN100. As standard documentation, the Toftejorg SaniMega can be supplied with a "Declaration of Conformity" for material specifications.

Certificates

2.1 material certificate.

PHYSICAL DATA

Materials

316L (UNS S31603), PEEK, EPDM

Standard connection: Inlet: 2" ISO clamp
Tank: 3" ISO clamp

Standard downpipe length: 1,200 mm

Standard downpipe length: 47.2 inch

Min. tank opening: $\varnothing 72.5$ mm

Min. tank opening: $\varnothing 2.9$ inch

Standard Surface finish:

Product contact parts: Ra 0.8 μ

Product contact parts: Ra 32 μ in

Non product contact parts: Ra 1.6 μ m

Non product contact parts: Ra 64 μ in

Temperature

Max. working temperature: 95°C

Max. working temperature: 203°F

Max. sterilisation temperature: 140°C

Max. sterilisation temperature: 284°F

Max. ambient temperature: 140°C

Max. ambient temperature: 284°F

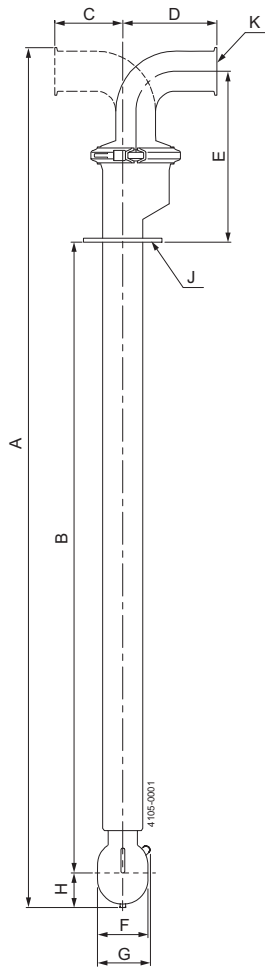
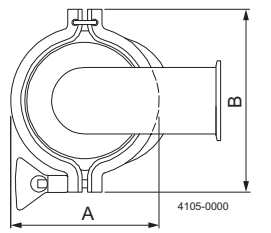
Weight: 6 kg

Weight: 13 lbs

Options

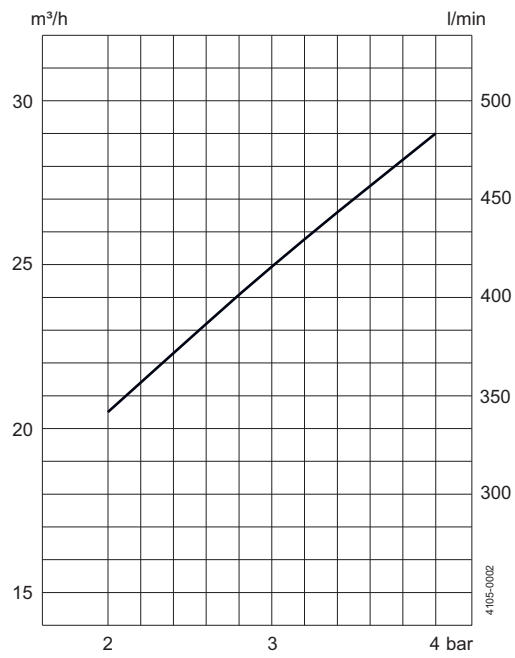
- A. Rotation sensor
- B. Counter parts to the standard clamp connections, including gaskets and clamp rings

Dimensions (mm)
Dimensions (inch)

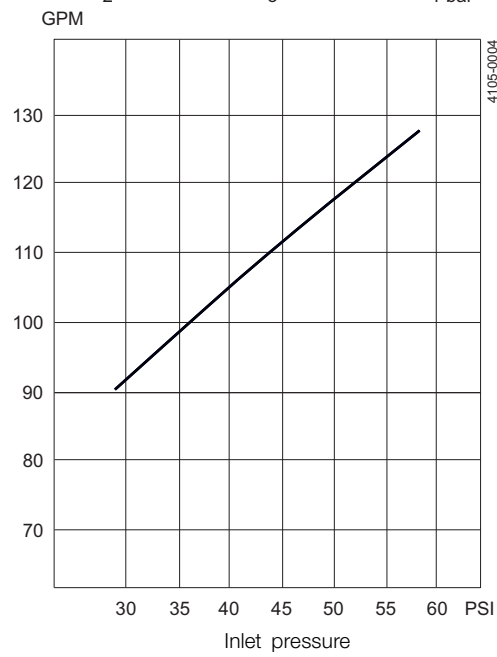


Flow Rate

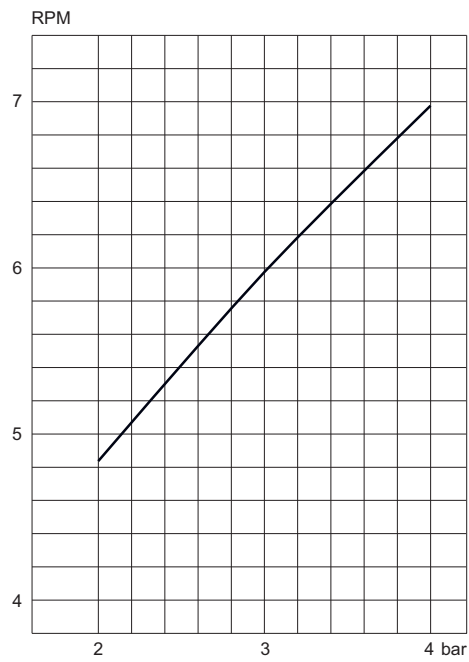
Flow rate



270° UP



Rotating speed



270° UP

A	B	C	D	E	F	G	H	J	K
116	144								
1505	1200	86.5*	120.5*	220**	ø65	ø72	53	76.2	50.8

A	B	C	D	E	F	G	H	J	K
4.57	5.67								
59.25	47.24	3.40*	4.74*	8.66**	ø2.56	ø2.83	2.09	76.2	50.8

* For welding end: 65/99 mm

** For DIN DN100: 234 mm

* For welding end: 2.6/3.9 inch

** For DIN DN100: 9.2 inch

Alfa Laval reserves the right to change specifications without prior notification. ALFA LAVAL is a trademark registered and owned by Alfa Laval Corporate AB.

ESE00333EN 1507

© Alfa Laval

How to contact Alfa Laval

Contact details for all countries are continually updated on our website. Please visit www.alfalaval.com to access the information direct.