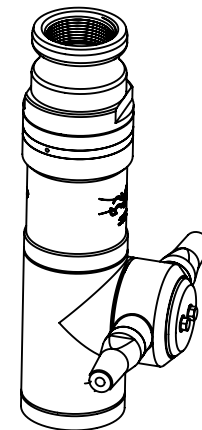
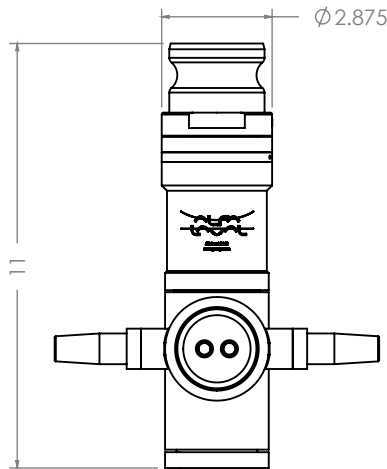
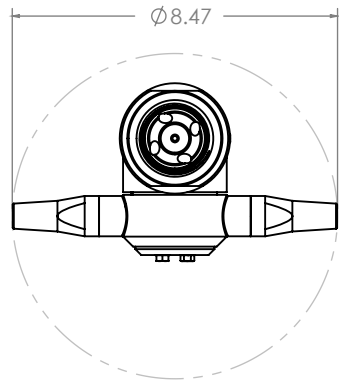


1 2 3 4 5 6



⁰³ 1-1/2" NPT & Cam/Groove Adapter

| | | Insertion Clearance (Inches) | |
|-------------------|--------|------------------------------|--------|
| | | Dual | Triple |
| Free Hand | Clutch | 4-3/4 | 6-3/4 |
| | Pin | 8-1/2 | 7-3/4 |
| Fixed Center Line | Clutch | 6-1/2 | 8-7/8 |
| | Pin | 9-3/4 | 9-3/4 |

- Notes:
- 316 SS, 18-8 Fasteners, Plastics, and Elastomers
 - Weight: 14-1/2 lbs.
 - Dual (Shown) and Triple Nozzle Available
 - Nozzle Sizes: range from 1/4" to 1/2"
 - Flow Range: 25 to 100 GPM
 - Pressure Range: 20 to 1000 PSIG
 - Min Full Wash Cycle: 8 minutes

| REVISIONS | | | | |
|-----------|--|-----|---------|-----|
| REV | ECN/DESCRIPTION | BY | DATE | APR |
| 01 | NEW DRAWING | BFG | 03AUG06 | BFG |
| 02 | ADDED INSERTION CLEARANCE DIAMETER SKETCH | JAD | 11NOV10 | JAD |
| 03 | NEW BORDER FORMAT. 1-1/2" NPT WAS 2" NPT. CHANGED TITLE. | CM | 02DEC14 | CM |

THIS DRAWING IS THE PROPERTY OF ALFA LAVAL REPRODUCTIONS AND USE OTHER THAN BORROWER'S AGREEMENT IS PROHIBITED. THIS DOCUMENT SHALL NOT BE LENT OR DISPOSED OF DIRECTLY OR INDIRECTLY NOR USED FOR ANY PURPOSE OTHER THAN THAT WHICH IS SPECIFICALLY FURNISHED.

DIMENSIONS ARE IN INCHES DIMENSIONS INTERPRETED PER ASME 14.5M-1994
 TOLERANCES:
 .X ±1/16
 .XX ±0.010
 .XXX ±0.005
 ANGLE ±0.5°

DRAWN BY: BFG
 DRAWN DATE: 8/3/2006

APPROVED BY: BFG
 APPROVED DATE: 8/3/2006

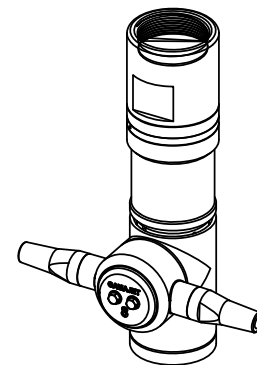
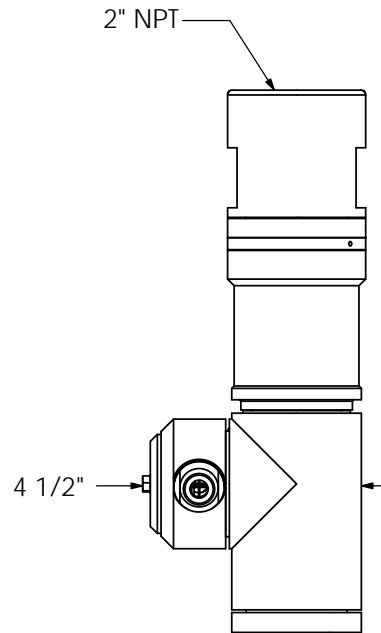
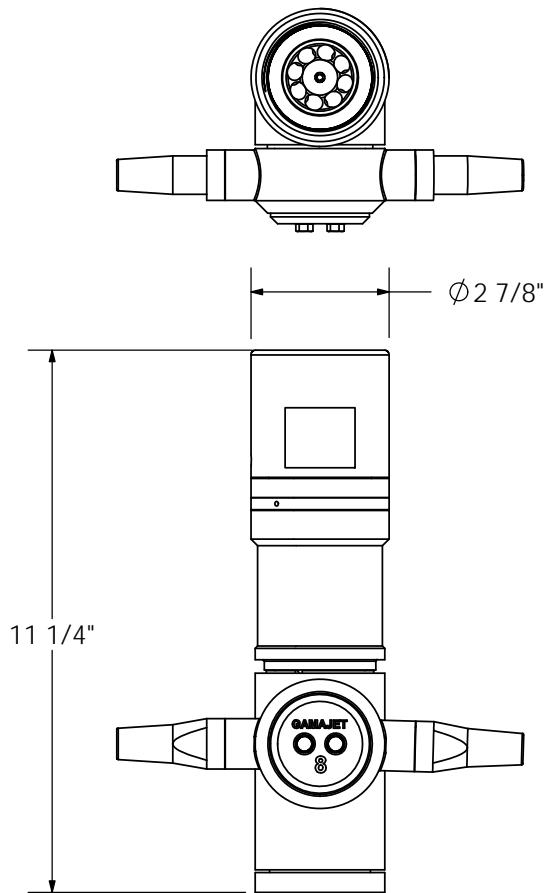
SIZE: A SCALE: 1:5 FINISH: ??? Ra MATERIAL: Various

Alfa Laval

DESCRIPTION: DUAL NOZZLE WITH ⁰³ 1-1/2" INLET GJ 8

DWG. NO.: GJ 8-1028-CS (2N)

REV: 03 SHEET: 1/1



Notes:

- 316 SS, 18-8 Fasteners, Plastics, and Elastomers
- Weight: 14-1/2 lbs.
- Dual (Shown) and Triple Nozzle Available
- Nozzle Sizes: range from 1/4" to 1/2"
- Flow Range: 25 to 100 GPM
- Pressure Range: 20 to 1000 PSIG
- Min Full Wash Cycle: 8 minutes

| | | Insertion Clearance (Inches) | |
|-------------------|--------|------------------------------|--------|
| | | Dual | Triple |
| Free Hand | Clutch | 4-3/4 | 6-3/4 |
| | Pin | 8-1/2 | 7-3/4 |
| Fixed Center Line | Clutch | 6-1/2 | 8-7/8 |
| | Pin | 9-3/4 | 9-3/4 |

UNLESS OTHERWISE SPECIFIED
 * DIMENSIONS ARE IN INCHES
 * [] DIMENSIONS ARE mm
 * DEBURR ALL SURFACES
 * FILLET RAD.: 0.015
 * TOLERANCES:
 XX ±0.01
 XXX ±0.005
 ANGLE ±1°
 MATERIAL:
 Various
 FINISH (UNLESS OTHERWISE SPECIFIED):
 ??? Ra
 SCALE: Full

| Alfa Laval | |
|--------------|---------------------------|
| TITLE | Dual Nozzle with 2" Inlet |
| EQUIPMENT | GJ 8 |
| DWG. NO. | --- |
| SHEET 1 OF 1 | |

THIS DRAWING IS THE PROPERTY OF ALFA LAVAL REPRODUCTIONS AND USE OTHER THAN BORROWER'S AGREEMENT IS PROHIBITED. THIS DOCUMENT SHALL NOT BE LENT OR DISPOSED OF DIRECTLY OR INDIRECTLY NOR USED FOR ANY PURPOSE OTHER THAN THAT WHICH IS SPECIFICALLY FURNISHED.

| DRAWN | DATE | Rev. | Description |
|-------|----------|------|-------------|
| BFG | 08/03/06 | 1 | New Drawing |
| | | | |
| | | | |
| | | | |