

THIW



HOLLOW CONE

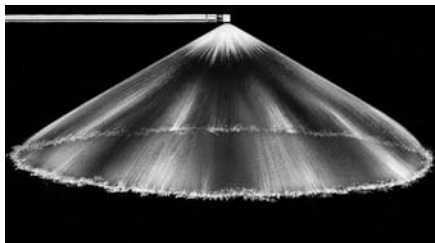
Tangential Inlet/Wide Spray Band

DESIGN FEATURES

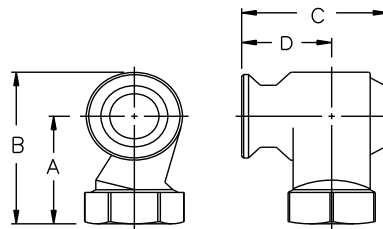
- Large free passage
- Clog-resistant; nozzles have no internal parts
- Wide spray band
- Female connection
- Flanged connection available
- Patented design
- Silicon carbide available upon request
- Inlet and outlet are in-line

SPRAY CHARACTERISTICS

- Spray pattern:** Hollow Cone
- Spray angle:** Wide
- Flow rates:** 4.11 to 564 gpm



Hollow Cone - Wide Angle



Dimensions are approximate. Check with BETE for critical dimension applications.

THW Flow Rates and Dimensions

Hollow Cone, Wide Spray Angles, 1" to 3" Pipe Sizes

Female Pipe Size	Nozzle Number	Spray Ang. 5 15 40 PSI PSI PSI	K Factor	GALLONS PER MINUTE @ PSI								Approx. Orifice Dia. (in.)	Free Pass. Dia. (in.)	Dimensions (in.) (MAX)				Wt. (lbs.)
				3 PSI	5 PSI	7 PSI	10 PSI	15 PSI	20 PSI	30 PSI	40 PSI			A	B	C	D	
1	THFW1508	100° 100° 100°	2.37	4.11	5.30	6.27	7.50	9.19	10.6	13.0	15.0	0.34	0.34	2.31	3.13	2.33	1.40	1.40
	THFW1808	115° 115° 115°	2.85	4.93	6.36	7.53	9.00	11.0	12.7	15.6	18.0	0.38	0.38					
	THFW2308	120° 120° 120°	3.64	6.30	8.13	9.62	11.5	14.1	16.3	19.9	23.0	0.44	0.44					
	THFW2708		4.27	7.39	9.55	11.3	13.5	16.5	19.1	23.4	27.0	0.47	0.47					
	THFW3208		5.06	8.76	11.3	13.4	16.05	19.6	22.6	27.7	32.0	0.44	0.44					
	THFW3808		6.01	10.4	13.4	15.9	19.0	23.3	26.9	32.9	38.0	0.60	0.60					
1 1/4	THFW3210	120° 120° 120°	5.06	8.76	11.3	13.4	16.0	19.6	22.6	27.7	32.0	0.55	0.55	2.81	3.79	2.86	1.74	1.65
	THFW3810		6.01	10.4	13.4	15.9	19.0	23.3	26.9	32.9	38.0	0.63	0.63					
	THFW4110		6.48	11.2	14.5	17.2	20.5	25.1	29.0	35.5	41.0	0.66	0.66					
	THFW5210		8.22	14.2	18.4	21.8	26.0	31.8	36.8	45.0	52.0	0.78	0.78					
	THFW7010		11.1	19.2	24.7	29.3	35.0	42.9	49.5	60.6	70.0	1.03	0.89					
1 1/2	THFW6112	110° 110° 110°	9.65	16.7	21.6	25.5	30.5	37.4	43.1	52.8	61.0	0.77	0.77	2.98	4.14	3.62	2.27	1.94
	THFW7012	112° 115° 115°	11.1	19.2	24.7	29.3	35.0	42.9	49.5	60.6	70.0	0.84	0.84					
	THFW7712	117° 120° 120°	12.2	21.1	27.2	32.2	38.5	47.2	54.4	66.7	77.0	0.92	0.92					
	THFW9012	117° 120° 120°	14.2	24.6	31.8	37.6	45.0	55.1	63.6	77.9	90.0	1.03	1.03					
	THFW12712	117° 120° 120°	20.1	34.8	44.9	53.1	63.5	77.8	89.8	110	127	1.30	1.06					
	THFW14512	117° 120° 120°	22.9	39.7	51.3	60.7	72.5	88.8	103	126	145	1.42	1.06					

$$\text{Flow Rate (GPM)} = K\sqrt{\text{PSI}}$$

Standard Materials: Brass, Carbon Steel and 316 Stainless Steel.

Spray angle performance varies with pressure. Contact BETE for specific data on critical applications.

TO ORDER: specify pipe size, connection type, nozzle number, spray angle, and material.



Silicon Carbide, Flanged



HOLLOW CONE

Dimensions are approximate. Check with BETE for critical dimension applications.

THW Flow Rates and Dimensions
Hollow Cone, Wide Spray Angles, 1" to 3" Pipe Sizes

Female Pipe Size	Nozzle Number	Spray Ang.			K Factor	GALLONS PER MINUTE @ PSI								Approx. Orifice Dia. (in.)	Free Pass. Dia. (in.)	Dimensions (in.) (MAX)				Wt. (lbs.)
		5 PSI	15 PSI	40 PSI		3 PSI	5 PSI	7 PSI	10 PSI	15 PSI	20 PSI	30 PSI	40 PSI			A	B	C	D	
2	THFW8516	112°	115°	115°	13.4	23.3	30.1	35.6	42.5	52.1	60.1	73.6	85.0	0.86	0.86	3.63	5.12	4.46	2.72	3.25
	THFW10516	120°	120°	120°	16.6	28.8	37.1	43.9	52.5	64.3	74.2	90.9	105	1.00	1.00					
	THFW12516	119°	120°	120°	19.8	34.2	44.2	52.3	62.5	76.5	88.4	108	125	1.14	1.14					
	THFW14516				22.9	39.7	51.3	60.7	72.5	88.8	103	126	145	1.27	1.27					
	THFW17016				26.9	46.6	60.1	71.1	85.0	104	120	147	170	1.39	1.39					
	THFW19216	120°	120°	120°	30.4	52.6	67.9	80.3	96.0	118	136	166	192	1.52	1.44					
	THFW20516				32.4	56.1	72.5	85.8	103	126	145	178	205	1.63	1.44					
	THFW23016				36.4	63.0	81.3	96.2	115	141	163	199	230	1.75	1.44					
2 1/2	THFW17020	117°	120°	120°	26.9	46.6	60.1	71.1	85.0	104	120	147	170	1.33	1.33	4.93	6.82	5.97	3.81	7.06
	THFW19020	117°	120°	120°	30.0	52.0	67.2	79.5	95.0	116	134	165	190	1.42	1.42					
	THFW20520	117°	120°	120°	32.4	56.1	72.5	85.8	103	126	145	178	205	1.47	1.47					
	THFW23020				36.4	63.0	81.3	96.2	115	141	163	199	230	1.58	1.58					
	THFW28020				44.3	76.7	99.0	117	140	171	198	242	280	1.81	1.75					
	THFW32020	120°	120°	120°	50.6	87.6	113	134	160	196	226	277	320	2.02	1.75					
	THFW34020				53.8	93.1	120	142	170	208	240	294	340	2.09	1.75					
	THFW43520				68.8	119	154	182	218	266	308	377	435	2.44	1.75					
3	THFW18524				29.3	50.7	65.4	77.4	92.5	113	131	160	185	1.28	1.28	5.77	7.98	6.88	4.32	9.47
	THFW23024				36.4	63.0	81.3	96.2	115	141	163	199	230	1.44	1.44					
	THFW28024				44.3	76.7	99.0	117	140	171	198	242	280	1.63	1.63					
	THFW32024				50.6	87.6	113	134	160	196	226	277	320	1.78	1.78					
	THFW34024	120°	120°	120°	53.8	93.1	120	142	170	208	240	294	340	1.84	1.84					
	THFW41224				65.1	113	146	172	206	252	291	357	412	2.11	2.11					
	THFW46924				74.2	128	166	196	235	287	332	406	469	2.28	2.13					
	THFW52624				83.2	144	186	220	263	322	372	456	526	2.48	2.13					
	THFW56424				89.2	154	199	236	282	345	399	488	564	2.59	2.13					

Flow Rate (GPM) = K √PSI

Standard Materials: Brass, Carbon Steel and 316 Stainless Steel.

Spray angle performance varies with pressure. Contact BETE for specific data on critical applications.

CALL 413-772-0846
Call for the name of your nearest BETE representative.