

The PulsaPro[®] 900 pump is a modular and robust pump specifically designed to meet the needs of chemical, petrochemical, and oil and gas applications.

Designed to produce higher flows at higher pressures, the PulsaPro 900 offers superior quality at a lower total cost of ownership. The drive train construction, coupled with patented innovative technology makes operation and maintenance easy.

Key Features

Patented Features:

- Diagnostic package for instant and completely visual operation and diagnostics
- Precision Stroke Control

Patent Pending Features:

- Modular drive train construction allows for simple and economical multiplexing: Simplex, Duplex, Triplex or Quadruplex
- Optional high corrosion resistant fluorocarbon lined reagent head
- Front pull-out design for ease in routine maintenance without disturbing pump head and gearbox assemblies

Controls

- High quality, accurate Rotork[®] actuators

Operating Benefits

- Hydraulic Bypass Valve provides protection of the pump from over-pressurization
- Four bolt tie bar design resists pipe stress and promotes leak-free operation
- Special valve design facilitates quick removal of check valves without disassembling piping
- Four motor mounting options offer installation flexibility
- Five Year Gear Train Warranty



Aftermarket & Accessory Offerings

- Controls
- KOPkits
- Strainers
- One Way Valves
- Injectors

®

PulsaPro® 900

Process & Diaphragm Metering Pump

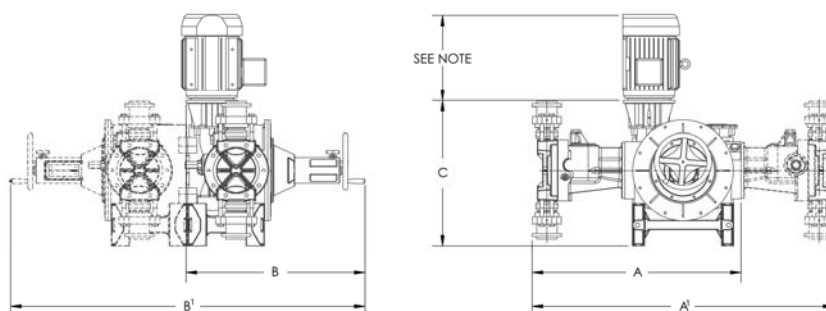
Specifications and Model Selection

MAXIMUM CAPACITY, LPH (GPH), AT RATED PRESSURE BY STROKES PER MINUTE ^{(1) (2)}										MAXIMUM RATED PRESSURE BAR (PSIG)	PISTON DIAMETER (in.)	CONNECTIONS (FLANGED ONLY)	
50Hz					60Hz				IN			OUT	
58	87	116	145	175	70	105	140	175					
441 (116)	662 (175)	883 (233)	1104 (292)	1325 (350)	530 (140)	795 (210)	1059 (280)	1324 (350)	301 (4366)	1.75	1" or 3"	1" or 2"	
599 (158)	899 (237)	1199 (317)	1498 (396)	1799 (475)	719 (190)	1079 (285)	1438 (380)	1798 (475)	230 (3336)	2	3"	2"	
972 (257)	1457 (385)	1943 (513)	2429 (642)	2916 (770)	1166 (308)	1749 (462)	2332 (616)	2915 (770)	147 (2132)	2.5	3"	2"	
1539 (407)	2309 (610)	3079 (813)	3849 (1017)	4620 (1220)	1847 (488)	2771 (732)	3695 (976)	4618 (1220)	102 (1479)	3	3"	2"	
2757 (728)	4132 (1092)	5511 (1456)	6889 (1820)	8270 (2185)	3308 (874)	4959 (1310)	6613 (1747)	8266 (2184)	58 (841)	4	4"	3"	
5205 (1375)	7804 (2062)	10378 (2742)	12973 (3427)	15574 (4114)	6246 (1650)	9365 (2474)	12454 (3290)	15568 (4113)	30.5 (442)	5.5	4" or 6"	3" or 4"	

1. Note: Flows shown are for a simplex pump. For duplex, triplex and quadruplex flows multiply by two, three or four respectively
 2. Note: Flows, pressures, other model data are subject to change. For actual specifics consult the factory.

Engineering Data

- Modular Configurations:** Simplex, Duplex, Triplex and Quadruplex
- Materials of Construction:** Reagent head is offered in SS316L, Alloy 20, Hastelloy C, fluorocarbon lined and others. Standard check valves are available in SS316L, Alloy 20, Hastelloy C, and others. Diaphragm is PTFE and Composite PTFE. Gear box is cast iron.
- Ratings:** Flows up to 15,600 LPH (Simplex) and pressures to 500 Bar. Accuracy (Manual). Steady state 10:1 turndown with +/-0.5% of set point capacity. Repeatability 10:1 turndown, +/-0.5% of rated capacity. Linearity 10:1 turndown, +/-0.5% of rated capacity.
- Standard process temperatures from -40°C/-40°F to 121°C/250°F (Max 149°C/300°F). Viscosity: 3000 CPS standard (higher viscosity capability available, consult factory), ball and disc check valves. Leak detection is pressure type with gauge and switch.
- Flow control options:** Available options include: automatic stroke length, MPC Vector, variable speed drive
- Compliant to Global Standards:**
 API-675 CE NORSOK (Consult Factory)
 ATEX NACE GOST
 Others



Note: Motor size varies by manufacturer

Dimension

DIMENSION	SIMPLEX		DUPLEX		TRIPLEX		QUADRUPLEX	
	mm	in.	mm	in.	mm	in.	mm	in.
A. (Length)	1561	61	2336 (A')	92 (A')	1561 (A')	61 (A')	2336 (A')	92 (A')
B. (Width)	1422	56	1422 (B')	56 (B')	2286 (B')	90 (B')	2746 (B')	108 (B')
C. (Height)	1129	45	1129	45	1129	45	1129	45

pulsafeeder.com



2883 Brighton Henrietta TL Rd
 Rochester, NY 14623
 Phone: ++1(585) 292-8000
 Fax: ++1 (585) 424-5619



An ISO 9001 and ISO 14001 Certified Company

PRO002-J11