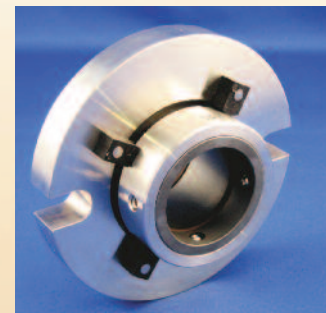
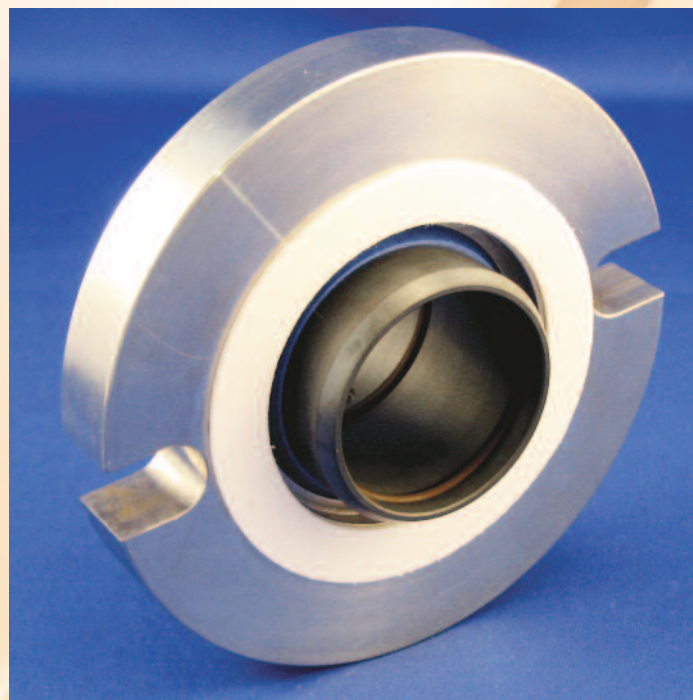


TUFFSEALL™



Tuthill introduces **TuffSeal™** for difficult to seal viscous liquid applications.

Customers told us they wanted pumps that don't leak, and pump seals that can take "whatever we dish out." Tuthill took them at their word and developed Tuffseal™ to handle a broad range of process conditions. Now available for the GlobalGear internal gear pumps, and HD circumferential piston pumps, Tuffseal™ offers a positive displacement pump sealing solution that delivers the leakage sealing performance of mechanical seals, and simplicity and ease of use of shaft packing.

Temperature	Up to 375° F Continuous, 400°F Intermittent
Pressure	Up to 300 psi
Run Dry	Will tolerate intermittent run dry
Abrasive Solids	Will tolerate moderate amounts of fine abrasive solids
Chemical Resistance	Same as PTFE for lips. Choice of Viton® EPR or Chemraz® for secondary seals. Food grade materials available.



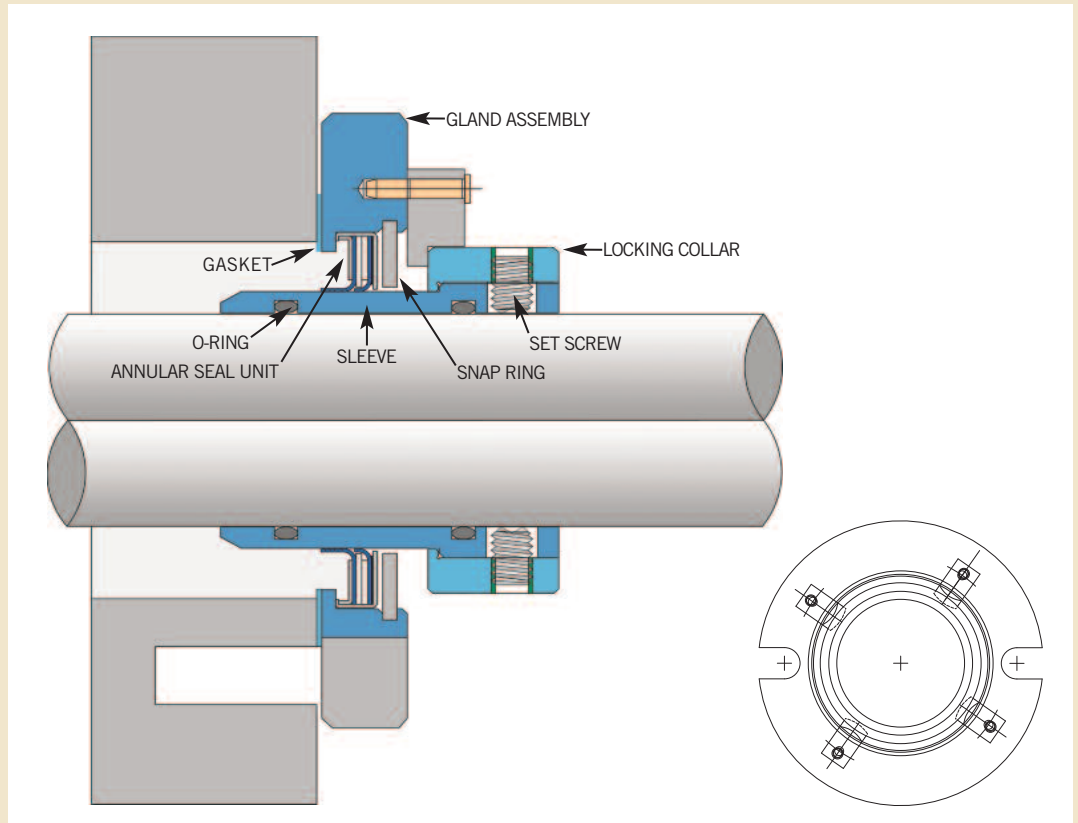
Engineered Solutions

Applications

Paints and coatings
Resins
Glues and adhesives
Corn syrup, molasses, liquid sweeteners
Asphalt
Soap, detergents, personal products
Printing inks
Polymers
Lubes and greases
Chocolate

12500 South Pulaski Road
Alsip, Illinois 60803 USA
phone: 708-389-2500
fax: 708-388-0869
email: tuthillpump@tuthill.com
www.tuthillpump.com

TUFFSEALL™



Sealing Elements

Proprietary metal filled PTFE Lips
 No springs, non-clogging
 No faces to stick together
 No dynamic o-rings to hang up
 Designed to resist fatigue and extend life

Silicon Carbide Sleeve

Very hard, resists abrasion, grooving or fretting
 Eliminates need for hard coatings
 Excellent for dissipating heat
 Positive drive

Field Repairable

Field repair is a press fit of a new insert
 Gland and sleeve are reused
 Repair kits available

Materials of Construction

Sealing Elements – Proprietary Metal Filled PTFE (*FDA PTFE optional*)
 Sleeve – Silicon Carbide
 Gland – SS316
 Drive Collar – SS304
 O-rings – Viton® (*Chemraz® or EPR optional, food grade o-rings available*)



Engineered Solutions

12500 South Pulaski Road
 Alsip, Illinois 60803 USA
 phone: 708-389-2500
 fax: 708-388-0869
 email: tuthillpump@tuthill.com
www.tuthillpump.com