

# WTZ

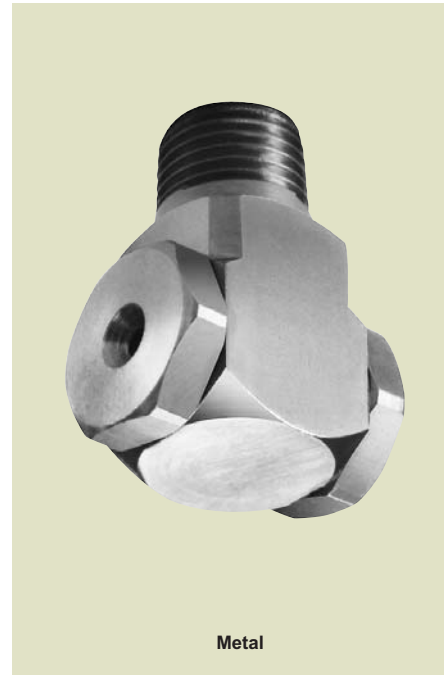
## Right Angle Full Cone

### DESIGN FEATURES

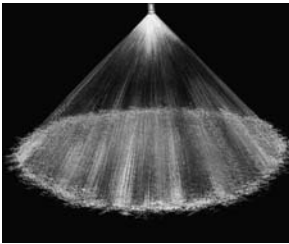
- No internal parts, clog-resistant
- Uniform distribution
- Male and female connections
- Large free passage

### SPRAY CHARACTERISTICS

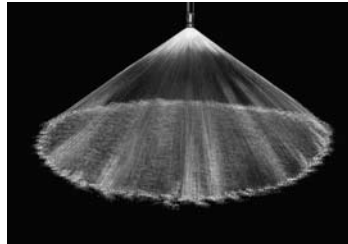
**Spray pattern:** Full Cone  
**Spray angle:** 90° and 110°  
**Flow rates:** 0.18 to 49 gpm



Metal

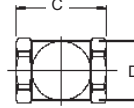
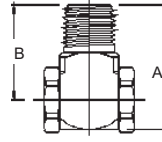


Full Cone 90°

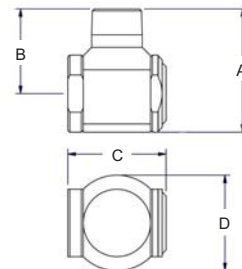


Full Cone 110°

Dimensions are approximate.  
 Check with BETE for critical dimension applications.



Metal



3/4" and 1"



3/4" and 1"

### WTZ Flow Rates and Dimensions

Full Cone, 90° and 110° Spray Angles, 1/4", 3/8", 1/2", 3/4", and 1" Pipe Size

| Male or Female Pipe Size | Nozzle Number | K Factor | GALLONS PER MINUTE @ PSI |        |        |        |        |        |        |        |         | Approx. Orifice Dia. (in) | Dimensions (in.) Metal Only |      |      |      |
|--------------------------|---------------|----------|--------------------------|--------|--------|--------|--------|--------|--------|--------|---------|---------------------------|-----------------------------|------|------|------|
|                          |               |          | 5 PSI                    | 10 PSI | 15 PSI | 20 PSI | 30 PSI | 40 PSI | 60 PSI | 80 PSI | 100 PSI |                           | A                           | B    | C    | D    |
| 1/4"                     | WTZ 50        | 0.079    | 0.18                     | 0.25   | 0.30   | 0.35   | 0.43   | 0.50   | 0.61   | 0.70   | 0.79    | 0.075                     | 1.31                        | 1.00 | 0.80 | 0.63 |
|                          | WTZ 56        | 0.088    | 0.20                     | 0.28   | 0.34   | 0.39   | 0.48   | 0.56   | 0.68   | 0.79   | 0.88    | 0.079                     |                             |      |      |      |
|                          | WTZ 62        | 0.098    | 0.22                     | 0.31   | 0.38   | 0.44   | 0.54   | 0.62   | 0.76   | 0.88   | 0.98    | 0.083                     |                             |      |      |      |
|                          | WTZ 77        | 0.122    | 0.27                     | 0.39   | 0.47   | 0.55   | 0.67   | 0.77   | 0.95   | 1.10   | 1.22    | 0.091                     |                             |      |      |      |
| 3/8"                     | WTZ 98        | 0.155    | 0.35                     | 0.49   | 0.60   | 0.69   | 0.85   | 0.98   | 1.20   | 1.38   | 1.55    | 0.102                     | 1.50                        | 1.12 | 1.17 | 0.75 |
|                          | WTZ 120       | 0.196    | 0.44                     | 0.62   | 0.76   | 0.88   | 1.07   | 1.24   | 1.52   | 1.75   | 1.96    | 0.118                     |                             |      |      |      |
|                          | WTZ 150       | 0.245    | 0.55                     | 0.77   | 0.95   | 1.10   | 1.34   | 1.55   | 1.90   | 2.19   | 2.45    | 0.130                     |                             |      |      |      |
|                          | WTZ 170       | 0.275    | 0.61                     | 0.87   | 1.06   | 1.23   | 1.50   | 1.74   | 2.13   | 2.46   | 2.75    | 0.138                     |                             |      |      |      |
|                          | WTZ 200       | 0.309    | 0.69                     | 0.98   | 1.20   | 1.38   | 1.69   | 1.95   | 2.39   | 2.76   | 3.09    | 0.146                     |                             |      |      |      |
|                          | WTZ 250       | 0.392    | 0.88                     | 1.24   | 1.52   | 1.75   | 2.15   | 2.48   | 3.04   | 3.51   | 3.92    | 0.163                     |                             |      |      |      |
|                          | WTZ 280       | 0.441    | 0.99                     | 1.39   | 1.71   | 1.97   | 2.42   | 2.79   | 3.42   | 3.95   | 4.41    | 0.173                     |                             |      |      |      |
|                          | WTZ 310       | 0.490    | 1.10                     | 1.55   | 1.90   | 2.19   | 2.69   | 3.10   | 3.80   | 4.39   | 4.90    | 0.183                     |                             |      |      |      |
| WTZ 390                  | 0.613         | 1.37     | 1.94                     | 2.37   | 2.74   | 3.36   | 3.88   | 4.75   | 5.48   | 6.67   | 0.205   |                           |                             |      |      |      |
| WTZ 500                  | 0.785         | 1.75     | 2.48                     | 3.04   | 3.51   | 4.30   | 4.96   | 6.08   | 7.02   | 7.85   | 0.228   |                           |                             |      |      |      |
| 1/2"                     | WTZ 620       | 0.98     | 2.19                     | 3.10   | 3.80   | 4.38   | 5.37   | 6.20   | 7.59   | 8.77   | 9.80    | 0.287                     | 1.87                        | 1.38 | 1.48 | 1.00 |
|                          | WTZ 780       | 1.23     | 2.74                     | 3.88   | 4.75   | 5.48   | 6.71   | 7.75   | 9.49   | 11.0   | 12.3    | 0.315                     |                             |      |      |      |
|                          | WTZ 980       | 1.54     | 3.45                     | 4.88   | 5.98   | 6.91   | 8.46   | 9.77   | 12.0   | 13.8   | 15.4    | 0.343                     |                             |      |      |      |
|                          | WTZ 1120**    | 1.77     | 3.96                     | 5.60   | 6.86   | 7.92   | 9.70   | 11.2   | 13.7   | 15.8   | 17.7    | 0.389                     |                             |      |      |      |
|                          | WTZ 1280**    | 2.02     | 4.53                     | 6.40   | 7.84   | 9.05   | 11.1   | 12.8   | 15.7   | 18.1   | 20.2    | 0.420                     |                             |      |      |      |
|                          | WTZ 1440**    | 2.28     | 5.09                     | 7.20   | 8.82   | 10.2   | 12.5   | 14.4   | 17.6   | 20.4   | 22.8    | 0.391                     |                             |      |      |      |
| 3/4" *                   | WTZ 1200      | 1.90     | 4.24                     | 6.00   | 7.35   | 8.49   | 10.4   | 12.0   | 14.7   | 17.0   | 19.0    | 0.335                     | 3.00                        | 2.00 | 2.00 | 2.00 |
|                          | WTZ 1500      | 2.37     | 5.30                     | 7.50   | 9.19   | 10.6   | 13.0   | 15.0   | 18.4   | 21.2   | 23.7    | 0.412                     |                             |      |      |      |
|                          | WTZ 1900      | 3.00     | 6.72                     | 9.50   | 11.6   | 13.4   | 16.5   | 19.0   | 23.3   | 26.9   | 30.0    | 0.469                     |                             |      |      |      |
| 1" *                     | WTZ 2200      | 3.48     | 7.78                     | 11.0   | 13.5   | 15.6   | 19.1   | 22.0   | 26.9   | 31.1   | 34.8    | 0.500                     | 3.20                        | 2.20 | 2.55 | 2.48 |
|                          | WTZ 3100      | 4.90     | 11.0                     | 15.5   | 19.0   | 21.9   | 26.9   | 31.0   | 38.0   | 43.8   | 49.0    | 0.531                     |                             |      |      |      |

Flow Rate (GPM) = K √PSI

Standard Materials: Brass, PVC, 303 Stainless Steel and 316 Stainless Steel.

\*Male threads ONLY. Female threads available on request. \*\*90° Spray Angle ONLY; other angles available on request.

Spray angle performance varies with pressure. Contact BETE for specific data on critical applications.



WHIRL

CALL 1-413-772-0846  
 Call for the name of your nearest BETE representative.