

WTX



WHIRL

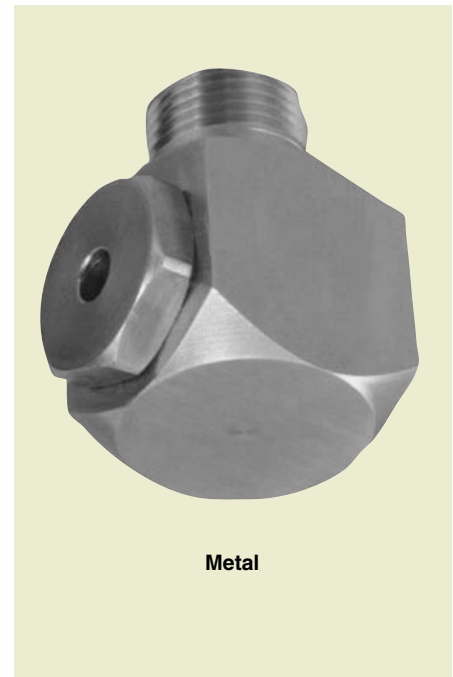
Extended Life/Hollow Cone

DESIGN FEATURES

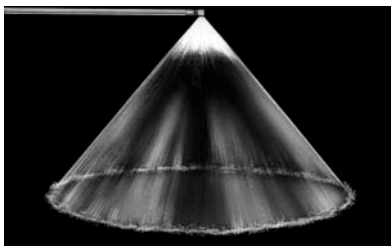
- Tangential whirl
- Oversized body for extended life
- Male and female connections
- Large free passage

SPRAY CHARACTERISTICS

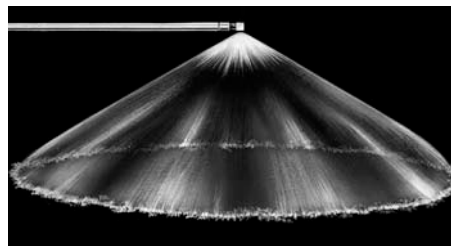
- Spray pattern: Hollow Cone
- Spray angles: 70° to 140°
- Flow rates: 0.125 to 145 l/min



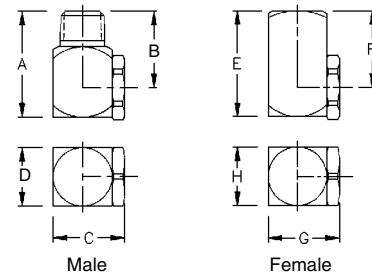
Metal



Hollow Cone 80°



Hollow Cone 120°



Male

Female

Dimensions are approximate. Check with BETE for critical dimension applications.

WTX Flow Rates and Dimensions

Hollow Cone, Medium and Extra Wide Spray Angles, 1/8" to 3/4" Pipe Sizes, BSP or NPT

Male or Female Pipe Size	Nozzle Number	Spray Angle	K Factor	LITERS PER MINUTE @ BAR								Approx. (mm)		Dimensions for Metal Only (mm)								Wt. (g) Metal
				0.3 bar	0.5 bar	0.7 bar	1 bar	2 bar	3 bar	5 bar	7 bar	Inlet Dia.	Orifice Dia.	A	B	C	D	E	F	G	H	
1/8	WTX10	70° 110°	0.228	0.125	0.161	0.191	0.228	0.322	0.395	0.510	0.603	1.02	1.17	28.4	22.4	22.4	19.1	25.4	19.1	22.4	19.1	32
	WTX20	70° 115°	0.456	0.250	0.322	0.381	0.456	0.645	0.789	1.02	1.21	1.52	1.52									
	WTX40	70°	0.912	0.499	0.645	0.763	0.912	1.29	1.58	2.04	2.41	2.29	2.29									
	WTX50	115°	1.14	0.624	0.806	0.953	1.14	1.61	1.97	2.55	3.01	2.29	2.29									
	WTX60	70° 115°	1.37	0.749	0.967	1.14	1.37	1.93	2.37	3.06	3.62	2.54	2.79									
	WTX70	115°	1.60	0.874	1.13	1.33	1.60	2.26	2.76	3.57	4.22	2.54	2.79									
	WTX80	120°	1.82	0.999	1.29	1.53	1.82	2.58	3.16	4.08	4.82	2.79	3.05									
	WTX100	70° 115°	2.28	1.25	1.61	1.91	2.28	3.22	3.95	5.10	6.03	3.30	3.30									
	WTX130	120°	2.96	1.62	2.09	2.48	2.96	4.19	5.13	6.62	7.84	3.56	3.56									
	WTX160	70°	3.65	2.00	2.58	3.05	3.65	5.16	6.32	8.15	9.65	3.81	4.06									
WTX180	120°	4.10	2.25	2.90	3.43	4.10	5.80	7.10	9.17	10.9	4.32	4.06										
WTX200	70°	4.56	2.50	3.22	3.81	4.56	6.45	7.89	10.2	12.1	4.32	4.83										
1/4	WTX12	80°	0.273	0.150	0.193	0.229	0.273	0.387	0.474	0.611	0.724	1.02	1.27	33.3	25.4	22.4	19.1	33.3	25.4	22.4	19.1	74
	WTX18	80°	0.410	0.225	0.290	0.343	0.410	0.580	0.710	0.917	1.09	1.52	1.52									
	WTX20	70° 110°	0.456	0.250	0.322	0.381	0.456	0.645	0.789	1.02	1.21	1.52	1.52									
	WTX27	80°	0.615	0.337	0.435	0.515	0.615	0.870	1.07	1.38	1.63	1.78	2.03									
	WTX35	100°	0.798	0.437	0.564	0.667	0.798	1.13	1.38	1.78	2.11	2.03	2.29									
	WTX40	70° 80°	0.912	0.499	0.645	0.763	0.912	1.29	1.58	2.04	2.41	2.03	2.29									
	WTX42	120°	0.957	0.524	0.677	0.801	0.957	1.35	1.66	2.14	2.53	2.03	2.29									
	WTX48	105°	1.09	0.599	0.773	0.915	1.09	1.55	1.89	2.45	2.89	2.29	2.79									

$$\text{Flow Rate (l/min)} = K \sqrt{\text{bar}}$$

Standard Materials: Brass, 303 Stainless Steel and 316 Stainless Steel.

Spray angle performance varies with pressure. Contact BETE for specific data on critical applications.

TO ORDER: specify pipe size, connection type, nozzle number, spray angle, and material.

Dimensions are approximate. Check with BETE for critical dimension applications.

WTX Flow Rates and Dimensions

Hollow Cone, Medium and Extra Wide Spray Angles, 1/8" to 3/4" Pipe Sizes, BSP or NPT

Male or Female Pipe Size	Nozzle Number	Spray Angle	K Factor	LITERS PER MINUTE @ BAR								Approx. (mm)		Dimensions for Metal Only (mm)								Wt. (g) Metal
				0.3 bar	0.5 bar	0.7 bar	1 bar	2 bar	3 bar	5 bar	7 bar	Inlet Dia.	Orifice Dia.	A	B	C	D	E	F	G	H	
1/4	WTX53	80°	1.21	0.662	0.854	1.01	1.21	1.71	2.09	2.70	3.20	2.29	2.79	33.3	25.4	22.2	19.1	33.3	25.4	25.4	19.1	74
	WTX60	70°	1.37	0.749	0.967	1.14	1.37	1.93	2.37	3.06	3.62	2.54	2.79									
	WTX68	120°	1.55	0.849	1.10	1.30	1.55	2.19	2.68	3.47	4.10	2.54	3.30									
	WTX80	120°	1.82	0.999	1.29	1.53	1.82	2.58	3.16	4.08	4.82	3.30	3.30									
	WTX100	70° 115°	2.28	1.25	1.61	1.91	2.28	3.22	3.95	5.10	6.03	3.30	3.56									
	WTX130	120°	2.96	1.62	2.09	2.48	2.96	4.19	5.13	6.62	7.84	3.81	4.06									
	WTX150	120°	3.42	1.87	2.42	2.86	3.42	4.83	5.92	7.64	9.04	4.06	4.32									
	WTX160	70°	3.65	2.00	2.58	3.05	3.65	5.16	6.32	8.15	9.65	4.06	4.32									
	WTX180	120°	4.10	2.25	2.90	3.43	4.10	5.80	7.10	9.17	10.9	4.57	4.57									
	WTX200	70° 120°	4.56	2.50	3.22	3.81	4.56	6.45	7.89	10.19	12.1	4.57	4.83									
	WTX220	120°	5.01	2.75	3.55	4.19	5.01	7.09	8.68	11.2	13.3	4.57	5.59									
	WTX240	120°	5.47	3.00	3.87	4.58	5.47	7.73	9.47	12.2	14.5	5.08	5.08									
	WTX260	80°	5.93	3.25	4.19	4.96	5.93	8.38	10.3	13.2	15.7	5.08	5.08									
	WTX280	80°	6.38	3.49	4.51	5.34	6.38	9.02	11.1	14.3	16.9	5.08	5.59									
	WTX300	70° 100°	6.84	3.74	4.83	5.72	6.84	9.67	11.8	15.3	18.1	5.08	5.59									
	WTX340	80°	7.75	4.24	5.48	6.48	7.75	11.0	13.4	17.3	20.5	5.59	6.10									
	WTX400	80°	9.12	4.99	6.45	7.63	9.12	12.9	15.8	20.4	24.1	6.35	7.11									
	WTX480	80°	10.9	5.99	7.73	9.15	10.9	15.5	18.9	24.5	28.9	6.35	6.86									
	WTX580	80°	13.2	7.24	9.35	11.1	13.2	18.7	22.9	29.6	35.0	6.86	7.62									
	WTX640	80°	14.6	7.99	10.3	12.2	14.6	20.6	25.3	32.6	38.6	6.86	7.62									
WTX680	80°	15.5	8.49	11.0	13.0	15.5	21.9	26.8	34.7	41.0	6.86	8.64										
WTX800	80°	18.2	9.99	12.9	15.3	18.2	25.8	31.6	40.8	48.2	6.86	8.64										
3/8	WTX100	70°	2.28	1.25	1.61	1.91	2.28	3.22	3.95	5.10	6.03	3.56	3.81	38.1	28.4	26.9	22.2	34.0	25.4	24.6	22.2	99
	WTX130	120°	2.96	1.62	2.09	2.48	2.96	4.19	5.13	6.62	7.84	3.56	4.57									
	WTX150	120°	3.42	1.87	2.42	2.86	3.42	4.83	5.92	7.64	9.04	4.32	4.57									
	WTX160	70°	3.65	2.00	2.58	3.05	3.65	5.16	6.32	8.15	9.65	4.32	4.57									
	WTX180	120°	4.10	2.25	2.90	3.43	4.10	5.80	7.10	9.17	10.9	4.32	4.83									
	WTX200	70° 115°	4.56	2.50	3.22	3.81	4.56	6.45	7.89	10.2	12.1	4.83	5.08									
	WTX220	120°	5.01	2.75	3.55	4.19	5.01	7.09	8.68	11.2	13.3	4.83	5.08									
	WTX240	120°	5.47	3.00	3.87	4.58	5.47	7.73	9.47	12.2	14.5	4.83	5.08									
	WTX260	120°	5.93	3.25	4.19	4.96	5.93	8.38	10.3	13.2	15.7	4.83	5.84									
	WTX270	120°	6.15	3.37	4.35	5.15	6.15	8.70	10.7	13.8	16.3	5.08	5.84									
	WTX300	70° 115°	6.84	3.74	4.83	5.72	6.84	9.67	11.8	15.3	18.1	5.08	5.84									
	WTX350	115°	7.98	4.37	5.64	6.67	7.98	11.3	13.8	17.8	21.1	6.10	6.35									
	WTX400	70° 105°	9.12	4.99	6.45	7.63	9.12	12.9	15.8	20.4	24.1	6.10	6.86									
	WTX440	105°	10.0	5.49	7.09	8.39	10.0	14.2	17.4	22.4	26.5	6.60	7.62									
WTX500	70° 105°	11.4	6.24	8.06	9.53	11.4	16.1	19.7	25.5	30.1	6.60	7.11										
WTX560	105°	12.8	6.99	9.02	10.7	12.8	18.0	22.1	28.5	33.8	6.60	7.87										
WTX600	70°	13.7	7.49	9.67	11.4	13.7	19.3	23.7	30.6	36.2	7.87	7.87										
WTX1000	70°	22.8	12.5	16.1	19.1	22.8	32.2	39.5	51.0	60.3	8.64	9.65										
1/2	WTX500	70°	11.4	6.24	8.06	9.53	11.4	16.1	19.7	25.5	30.1	7.62	7.62	47.5	34.8	38.1	31.8	47.8	35.1	38.1	31.8	320
	WTX600	70°	13.7	7.49	9.67	11.4	13.7	19.3	23.7	30.6	36.2	8.38	7.87									
	WTX800	70°	18.2	9.99	12.9	15.3	18.2	25.8	31.6	40.8	48.2	9.14	9.14									
	WTX1000	70° 110°	22.8	12.5	16.1	19.1	22.8	32.2	39.5	51.0	60.3	9.14	11.2									
	WTX1200	70°	27.3	15.0	19.3	22.9	27.3	38.7	47.4	61.1	72.4	10.2	12.2									
3/4	WTX800	70°	18.2	9.99	12.9	15.3	18.2	25.8	31.6	40.8	48.2	9.14	9.50	57.2	41.1	44.5	38.1	55.6	39.6	44.5	38.1	460
	WTX1000	70°	22.8	12.5	16.1	19.1	22.8	32.2	39.5	51.0	60.3	10.2	11.2									
	WTX1200	70°	27.3	15.0	19.3	22.9	27.3	38.7	47.4	61.1	72.4	11.2	11.2									
	WTX1400	80°	31.9	17.5	22.6	26.7	31.9	45.1	55.3	71.3	84.4	11.9	12.2									
	WTX1600	80° 115°	36.5	20.0	25.8	30.5	36.5	51.6	63.2	81.5	96.5	12.2	13.0									
	WTX1800	80°	41.0	22.5	29.0	34.3	41.0	58.0	71.0	91.7	109	12.7	14.2									
	WTX2000	90°	45.6	25.0	32.2	38.1	45.6	64.5	78.9	102	121	13.2	15.0									
	WTX2200	90°	50.1	27.5	35.5	41.9	50.1	70.9	86.8	112	133	13.5	16.0									
WTX2400	90°	54.7	30.0	38.7	45.8	54.7	77.3	94.7	122	145	14.0	17.5										

Flow Rate (l_{min}) = K√bar

Standard Materials: Brass, 303 Stainless Steel and 316 Stainless Steel.

Spray angle performance varies with pressure. Contact BETE for specific data on critical applications.



CALL 413-772-0846
Call for the name of your nearest BETE representative.