

TD/TD-K



WHIRL

Twist & Dry™ Hollow Cone

DESIGN FEATURES

- Patented locking mechanism for quick and easy change-out and maintenance
- Choose TD-K to operate at high pressures for greater yield capacity
- PEEK backup ring with Viton® 90 O-rings or Silicone (for higher temperatures)
- Female-threaded or butt weld pipe connections
- Easy assembly, no special tools required

- Orifice size: 0.864mm through 3.99mm
- Interchangeable swirl and orifice discs for variable patterns and flow rates
- Please visit www.bete.com/td-k.html for more information on the TD-K nozzle

SPRAY CHARACTERISTICS

- Hollow Cone
- Flow rates:** 35.3 to 5,970 l/hr
- Spray angle:** 50°, 55°, 60°, 65°, 70°, 75°, 80°



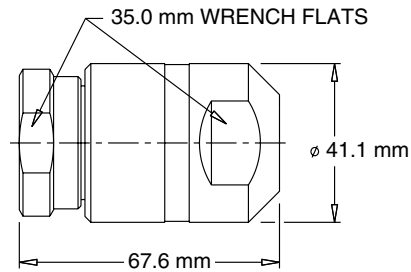
Female



70° Hollow Cone



Cutaway view of carrier showing lugs and BETE's unique locking design



Pipe Size	Weight (g)
1/4"	539
3/8"	524
1/2"	510
3/4"	482

Dimensions are approximate. Check with BETE for critical dimension applications.

Twist & Dry Flow Rates and Dimensions

Hollow Cone, 50° to 80° Spray Angles, 1/4", 3/8", 1/2" and 3/4" Pipe Size NPT, BSP or Welded

Female Pipe Size	Nozzle Number	Spray Angle	Swirl	Orifice (mm)	K Factor	LITERS PER HOUR @ BAR											
						15 bar	35 bar	50 bar	70 bar	90 bar	100 bar	120 bar	150 bar	175 bar	200 bar	275 bar	350 bar
1/4"	TD2-34	70°	SW2	0.864	9.12	35.3	53.9	64.5	76.3	86.5	91.2	99.9	112	121	129	151	171
	TD1-37	80°	SW1	0.940													
OR	TD2-40	75°	SW2	1.02	11.4	44.1	67.4	80.6	95.3	108	114	125	140	151	161	189	213
	TD1-49	85°	SW1	1.24													
3/8"	TD4-34	60°	SW4	0.864	13.7	53.0	80.9	96.7	114	130	137	150	167	181	193	227	256
	TD3-40	70°	SW3	1.02													
OR	TD5-34	50°	SW5	0.864	16.0	61.8	94.4	113	133	151	160	175	195	211	226	265	298
	TD4-40	65°	SW4	1.02													
OR	TD4-43	65°	SW4	1.09	18.2	70.6	108	129	153	173	182	200	223	241	258	302	341
	TD3-49	75°	SW3	1.24													
1/2"	TD6-37	50°	SW6	0.940	20.5	79.4	121	145	172	195	205	225	251	271	290	340	384
	TD5-40	60°	SW5	1.02													
	TD4-46	70°	SW4	1.17													
	TD3-55	75°	SW3	1.40													
OR	TD6-40	50°	SW6	1.02	22.8	88.3	135	161	191	216	228	250	279	301	322	378	426
	TD5-43	60°	SW5	1.09													
	TD4-52	70°	SW4	1.32													
3/4"	TD5-49	60°	SW5	1.24	25.1	97.1	148	177	210	238	251	275	307	332	355	416	469
	TD4-58	70°	SW4	1.47													
	TD3-67	80°	SW3	1.70													

$$\text{Flow Rate (l/hr)} = K \sqrt{\text{bar}}$$

Standard Materials: 316 Stainless Steel, Tungsten Carbide. Other materials available.

Spray angle performance varies with pressure. Contact BETE for specific data on critical applications.

TO ORDER: specify pipe size, connection type, nozzle number and material.

Dimensions are approximate. Check with BETE for critical dimension applications.

Twist & Dry Flow Rates and Dimensions

Hollow Cone, 50° to 80° Spray Angles, 1/4", 3/8", 1/2" and 3/4" Pipe Size NPT, BSP or Welded

Female Pipe Size	Nozzle Number	Spray Angle	Dia Swirl (mm)	K Factor	LITERS PER HOUR @ BAR											
					15 bar	35 bar	50 bar	70 bar	90 bar	100 bar	120 bar	150 bar	175 bar	200 bar	275 bar	350 bar
	TD6-46 TD5-52 TD4-61 TD3-70	55° 65° 75° 80°	SW6 1.17 SW5 1.32 SW4 1.55 SW3 1.78	27.4	106	162	193	229	259	273	300	335	362	387	453	512
	TD6-52 TD5-58 TD4-70	55° 65° 75°	SW6 1.32 SW5 1.47 SW4 1.78	31.9	124	189	226	267	303	319	349	391	422	451	529	597
	TD7-49 TD6-55 TD5-64 TD4-76	50° 60° 70° 80°	SW7 1.24 SW6 1.40 SW5 1.63 SW4 1.93	36.5	141	216	258	305	346	365	399	447	482	516	605	682
	TD7-52 TD6-61 TD5-70	50° 60° 70°	SW7 1.32 SW6 1.55 SW5 1.78	41.0	159	243	290	343	389	410	449	502	543	580	680	767
	TD7-58 TD6-64 TD5-76 TD4-91	55° 65° 75° 80°	SW7 1.47 SW6 1.63 SW5 1.93 SW4 2.31	45.6	177	270	322	381	432	456	499	558	603	645	756	853
	TD7-61 TD6-70 TD5-82	55° 65° 75°	SW7 1.55 SW6 1.78 SW5 2.08	50.1	194	297	355	419	476	501	549	614	663	709	831	938
	TD7-64 TD6-76 TD5-88	55° 65° 75°	SW7 1.63 SW6 1.93 SW5 2.24	54.7	212	324	387	458	519	547	599	670	724	773	907	1020
	TD8-67 TD7-76 TD6-88 TD5-109	50° 60° 70° 80°	SW8 1.70 SW7 1.93 SW6 2.24 SW5 2.77	68.4	265	404	483	572	649	684	749	837	904	967	1130	1280
	TD8-76 TD7-85 TD6-103	50° 65° 75°	SW8 1.93 SW7 2.16 SW6 2.62	82.0	318	485	580	686	778	820	899	1010	1090	1160	1360	1540
	TD8-82 TD7-97 TD6-115	55° 65° 75°	SW8 2.08 SW7 2.46 SW6 2.92	95.7	371	566	677	801	908	957	1050	1170	1270	1350	1590	1790
	TD9-82 TD8-91 TD7-106 TD6-127	50° 60° 70° 80°	SW9 2.08 SW8 2.31 SW7 2.69 SW6 3.23	109	424	647	773	915	1040	1090	1200	1340	1450	1550	1810	2050
	TD9-88 TD8-100 TD7-118 TD6-142	50° 60° 70° 80°	SW9 2.24 SW8 2.54 SW7 3.00 SW6 3.61	123	477	728	870	1030	1170	1230	1350	1510	1630	1740	2040	2300
	TD9-94 TD8-106 TD7-127	55° 65° 75°	SW9 2.39 SW8 2.69 SW7 3.23	137	530	809	967	1140	1300	1370	1500	1680	1810	1930	2270	2560
	TD9-106 TD8-121 TD7-145	55° 65° 75°	SW9 2.69 SW8 3.07 SW7 3.68	160	618	944	1130	1340	1510	1600	1750	1950	2110	2260	2650	2980
	TD10-103 TD9-115 TD8-133	50° 60° 70°	SW10 2.62 SW9 2.92 SW8 3.38	182	706	1080	1290	1530	1730	1820	2000	2230	2410	2580	3020	3410
	TD10-118 TD9-127 TD8-145	55° 60° 70°	SW10 3.00 SW9 3.23 SW8 3.68	205	794	1210	1450	1720	1950	2050	2250	2510	2710	2900	3400	3840
	TD9-136 TD8-157	65° 75°	SW9 3.45 SW8 3.99	228	883	1350	1610	1910	2160	2280	2500	2790	3020	3220	3780	4260
	TD9-148	65°	SW9 3.76	251	971	1480	1770	2100	2380	2510	2750	3070	3320	3550	4160	4690
	TD10-136 TD9-154	60° 70°	SW10 3.45 SW9 3.91	274	1060	1620	1930	2290	2590	2740	3000	3350	3620	3870	4540	5120
	TD10-151 TD10-157	60° 65°	SW10 3.84 SW10 3.99	296 319	1150 1240	1750 1890	2100 2260	2480 2670	2810 3030	2960 3190	3250 3500	3630 3910	3920 4220	4190 4510	4910 5290	5540 5970

Flow Rate (l/hr) = K √ bar

Standard Materials: 316 Stainless Steel, Tungsten Carbide. Other materials available.



CALL 1-413-772-2166
Call for the name of your nearest BETE representative.

Twist & Dry™

Twist & Dry™ Component System

WHIRL

The Twist & Dry™ component system was developed for the spray dryer industry. The TD-K was next developed as an innovative solution to expand spray dryer capacity up to 689 bar. The patented locking system locks components into place prior to installation. There are many interchangeable swirls and orifice disks available for varying the flow rates of the nozzles. Many materials are also available to allow for high temperature usage without leakage.

SPRAY SET-UPS

Twist & Dry nozzles have almost 1,000 different combinations of swirl and orifice discs to provide exactly the right flow rate and angle for your needs. The spray angle and flow rate are determined by the "swirl/orifice set-up"—a specific combination of one swirl disc and one orifice. To locate the right swirl and orifice combination refer to the following TD-K, Twist & Dry, and TDL pages.

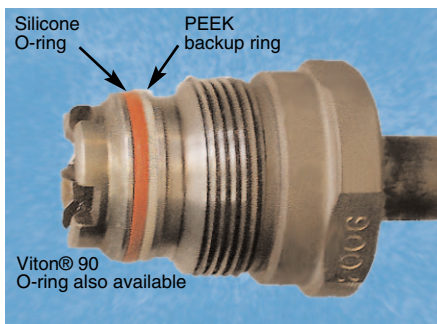
Spray angle is determined by the orifice geometry. Carriers and bodies differ in both material and design to accommodate both high temperature and pressure. The robust design allows for many material choices and combinations.



TDL Low Flow Twist & Dry™ Assembly

TD-K High Pressure Series

The TD-K is a high pressure nozzle in the Twist & Dry series. The series includes models TD-7K rated up to 483 bar and the TD-10K rated up to 689 bar.



Side View: TD-K body with PEEK backup ring

Often higher pressures can increase yield and save money. **Please visit www.bete.com/td-k.html.**

Twist & Dry Series

The Twist & Dry is a BETE original design that answers the needs of the spray drying industry. The BETE design offers superior performance as well as an innovative patented locking mechanism. Replace the wear parts of your spray dry nozzles without turning the lances upside down.

The BETE Twist & Dry is designed with the operator in mind. If you operate and maintain a spray dryer, you know just how difficult it can be to replace the nozzle wear parts.

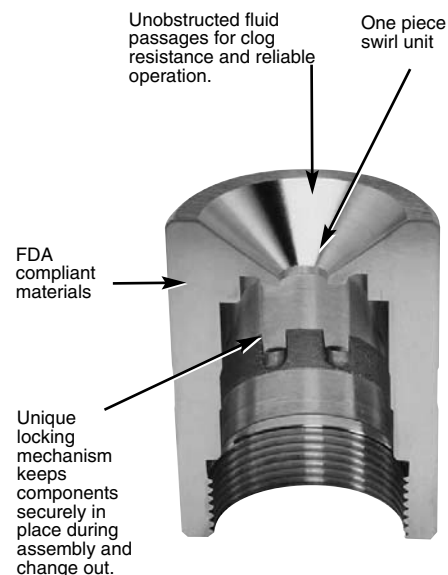


TD swirl disc



TD orifice disc

These unique features of the Twist & Dry design makes this chore much easier: fewer parts; rugged design—one piece swirl unit greatly reduces breakage of tungsten carbide pieces; easy assembly—the BETE Twist & Dry locking system keeps the swirl chamber and orifice "locked" into position during assembly; Materials— corrosion-resistant 303 Stainless Steel carrier, Tungsten Carbide swirl unit and orifice disk, Viton® O-rings, other materials are available. BETE provides software support, also: users of the Twist & Dry receive free-of-charge computer software that greatly simplifies selecting the correct swirl unit and orifice disk.



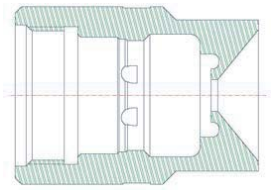
Cutaway view of the Twist & Dry carrier

TO ORDER: specify pipe size, connection type, nozzle number, and material.

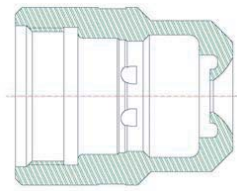
Twist & Dry™ Components & Options



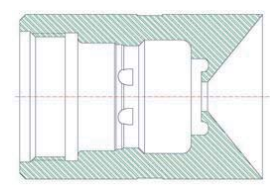
Pressure		Temperature		
bar	psi	up to 302°F (150°C)	up to 400°F (204°C)	up to 450°F (232°C)
689	10,000	TD 10K Viton 90 O-ring w/ PEEK Backup Ring Carrier in Duplex 2205 TD 10K only available in Carriers 5 and 11	TD 10K Viton 90 O-ring w/ PEEK Backup Ring Carrier in Duplex 2205 TD 10K only available in Carriers 5 and 11	TD 10K Silicone O-ring w/ PEEK Backup Ring Carrier in Duplex 2205 TD 10K only available in Carriers 5 and 11
483	7,000	TD 7K Viton 90 O-ring w/ PEEK Backup Ring	TD 7K Viton 90 O-ring w/ PEEK Backup Ring	TD 7K Silicone O-ring w/ PEEK Backup Ring
350	5,076	TD Viton 90 O-ring	TD Viton 90 O-ring	TD Silicone O-ring
241	3,500			
55	800			



Carrier 1 (C11) (shown)
Carrier 11 (C111) - without lugs



Standard TD Carrier
Carrier 2 (C12) (shown)
Carrier 5 (C15) - without lugs



Carrier 10 (C110) (shown)
Carrier 12 (C112) - without lugs

To Order: Spray Set-up Number

1/4 TD 2 - 025 - C11 - 7K - 45 - B @ 7H

pipe size

series

swirl number

orifice

carrier style
omit for TDL, or standard carrier, model #2

pressure
omit for TDL or if pressure is less than or equal to 3,500 psi (241 bar)

7K if pressure is greater than 3,500 psi and less than or equal to 7,000 psi; needs PEEK backup ring

10K if pressure is greater than 7,000 psi and less than or equal to 10,000 psi; needs PEEK backup ring + Duplex 2205 carrier material

material

thread
omit if NPT

temperature
omit if temperature is less than or equal to 400°F (204°C)

45 if temperature is greater than 400°F and less than or equal to 450°F (232°C); needs Silicone O-ring

PEEK™ is a registered trademark of Victrex.