

TDL

Twist & Dry™ Low Flow Hollow Cone



TDL Assembly

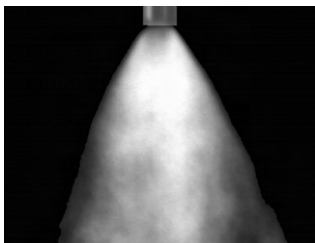
DESIGN FEATURES

- Patented locking mechanism for quick and easy change-out and maintenance
- 2-piece body for easy maintenance
- Lower flow rates than Twist & Dry series
- Female-threaded or butt weld pipe connections
- Orifice size: 0.018" through 0.058"
- Interchangeable swirl and orifice discs for variable patterns and flow rates

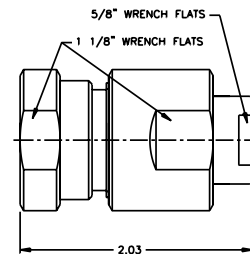
SPRAY CHARACTERISTICS

- Hollow Cone
- Flow rates:** 2.86 to 123 gph
- Spray angle:** 70° - 75°

WHIRL



70° Hollow Cone



Pipe Size	Weight (oz)
1/4"	4.2
3/8"	3.8

Dimensions are approximate. Check with BETE for critical dimension applications.

TDL Flow Rates and Dimensions

Hollow Cone, 70° to 75° Spray Angles, 1/4", and 3/8" Pipe Size NPT, BSP or Welded

Female Pipe Size	Nozzle Number	Swirl	Dia. (in.)	K Factor	GALLONS PER HOUR @ PSI											
					200 PSI	500 PSI	750 PSI	1000 PSI	1250 PSI	1500 PSI	1750 PSI	2000 PSI	2500 PSI	3000 PSI	4000 PSI	5000 PSI
1/4"	TDL4-18	SWL4	0.018	0.202	2.86	4.53	5.54	6.40	7.16	7.84	8.47	9.1	10.1	11.1	12.8	14.3
	TDL4-20	SWL4	0.020	0.215	3.04	4.81	5.89	6.80	7.60	8.33	9.00	9.62	10.8	11.8	13.6	15.2
	TDL4-22	SWL4	0.022	0.237	3.35	5.30	6.50	7.50	8.39	9.19	9.92	10.6	11.9	13.0	15.0	16.8
	TDL4-24	SWL4	0.024	0.272	3.85	6.08	7.45	8.60	9.62	10.5	11.4	12.2	13.6	14.9	17.2	19.2
	TDL4-27	SWL4	0.027	0.316	4.47	7.07	8.66	10.0	11.2	12.2	13.2	14.1	15.8	17.3	20.0	22.4
	TDL1-22	SWL1	0.022	0.348	4.92	7.78	9.53	11.0	12.3	13.5	14.6	15.6	17.4	19.1	22.0	24.6
OR	TDL1-24	SWL1	0.024	0.395	5.59	8.84	10.8	12.5	14.0	15.3	16.5	17.7	19.8	21.7	25.0	28.0
	TDL1-27	SWL1	0.027	0.459	6.48	10.3	12.6	14.5	16.2	17.8	19.2	20.5	22.9	25.1	29.0	32.4
	TDL1-30	SWL1	0.030	0.522	7.38	11.7	14.3	16.5	18.4	20.2	21.8	23.3	26.1	28.6	33.0	36.9
	TDL2-30	SWL2	0.030	0.632	8.94	14.1	17.3	20.0	22.4	24.5	26.5	28.3	31.6	34.6	40.0	44.7
	TDL2-33	SWL2	0.033	0.712	10.1	15.9	19.5	22.5	25.2	27.6	29.8	31.8	35.6	39.0	45.0	50.3
	TDL2-36	SWL2	0.036	0.791	11.2	17.7	21.7	25.0	28.0	30.6	33.1	35.4	39.5	43.3	50.0	55.9
3/8"	TDL2-38	SWL2	0.038	0.838	11.9	18.7	22.9	26.5	29.6	32.5	35.1	37.5	41.9	45.9	53.0	59.3
	TDL2-40	SWL2	0.040	0.917	13.0	20.5	25.1	29.0	32.4	35.5	38.4	41.0	45.9	50.2	58.0	64.8
	TDL2-42	SWL2	0.042	0.949	13.4	21.2	26.0	30.0	33.5	36.7	39.7	42.4	47.4	52.0	60.0	67.1
	TDL2-44	SWL2	0.044	0.980	13.9	21.9	26.8	31.0	34.7	38.0	41.0	43.8	49.0	53.7	62.0	69.3
	TDL2-46	SWL2	0.046	1.03	14.5	23.0	28.1	32.5	36.3	39.8	43.0	46.0	51.4	56.3	65.0	72.7
	TDL2-48	SWL2	0.048	1.11	15.7	24.7	30.3	35.0	39.1	42.9	46.3	49.5	55.3	60.6	70.0	78.3
3/8"	TDL2-50	SWL2	0.050	1.15	16.3	25.8	31.6	36.5	40.8	44.7	48.3	51.6	57.7	63.2	73.0	81.6
	TDL2-52	SWL2	0.052	1.25	17.7	27.9	34.2	39.5	44.2	48.4	52.3	55.9	62.5	68.4	79.0	88.3
	TDL2-54	SWL2	0.054	1.30	18.3	29.0	35.5	41.0	45.8	50.2	54.2	58.0	64.8	71.0	82.0	91.7
	TDL2-56	SWL2	0.056	1.33	18.8	29.7	36.4	42.0	47.0	51.4	55.6	59.4	66.4	72.7	84.0	93.9
	TDL3-50	SWL3	0.050	1.42	20.0	31.7	38.8	44.8	50.1	54.9	59.3	63.4	70.8	77.6	89.6	100
	TDL3-52	SWL3	0.052	1.51	21.4	33.8	41.4	47.8	53.4	58.5	63.2	67.6	75.6	82.8	95.6	107
3/8"	TDL3-54	SWL3	0.054	1.60	22.6	35.7	43.7	50.5	56.5	61.8	66.8	71.4	79.8	87.5	101	113
	TDL3-56	SWL3	0.056	1.69	23.9	37.8	46.3	53.5	59.8	65.5	70.8	75.7	84.6	92.7	107	120
	TDL3-58	SWL3	0.058	1.74	24.6	38.9	47.6	55.0	61.5	67.4	72.8	77.8	87.0	95.3	110	123

Flow Rate (GPM) = $K\sqrt{PSI}$

Standard Materials: Stainless Steel, Tungsten Carbide. Other materials available.

Spray angle performance varies with pressure. Contact BETE for specific data on critical applications.

TO ORDER: specify pipe size, connection type, nozzle number and material.