

IS

Rectangular Coverage/Mounted in Pairs

DESIGN FEATURES

- Effective wherever rectangular pattern is required
- High energy efficiency
- Low coefficient of discharge and large unimpeded openings
- Excellent clog resistance
- Mounted in opposing pairs
- Male connection

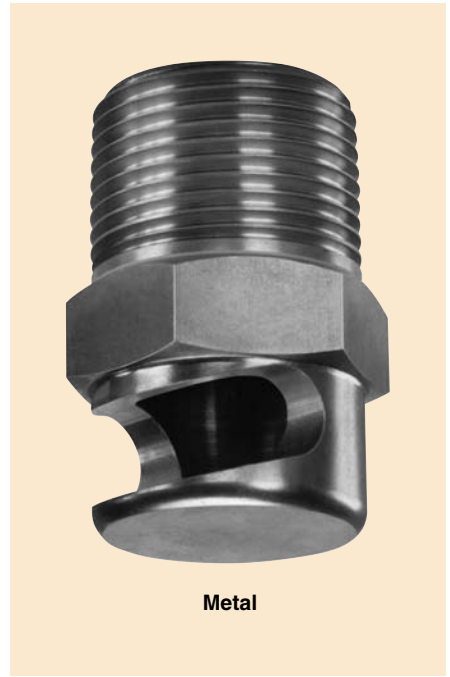
SPRAY CHARACTERISTICS

- Pattern widths of 18" to 120" can be achieved
- Good distribution with pressures as low as 0.035 bar
- Thick bands of droplets from opposing pairs intersect and fall uniformly

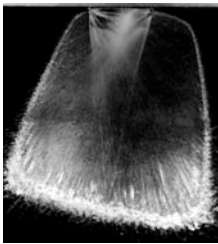
Spray pattern: Rectangular

Spray angle: See Pattern Width and Coverage Chart

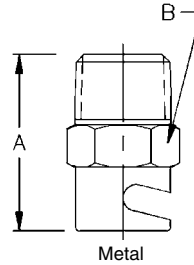
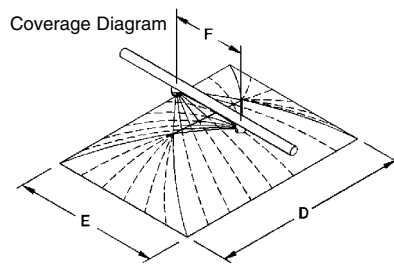
Flow rates: 1.77 to 649 l/min per pair



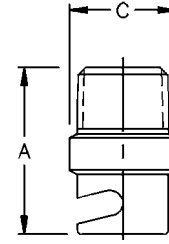
Metal



Rectangular Spray



Metal



Plastic

Dimensions are approximate. Check with BETE for critical dimension applications.

IS Flow Rates and Dimensions

Rectangular Spray Pattern, 1/16" to 1 1/2" Pipe Sizes, BSP or NPT

Coverage

300mm Mounting Height

Male Pipe Size	Nozzle Number	K Factor	LITERS PER MINUTE PER PAIR @ BAR										Nozzle Dim. (mm)		Wt. (g)	Metal	Plas.	Spacing (mm) F	Approx. Cover. (mm) @ bar							
			0.03 bar	0.07 bar	0.1 bar	0.2 bar	0.5 bar	0.7 bar	1 bar	1.5 bar	A	B	C	0.07 bar					0.1 bar		0.25 bar		0.5 bar			
			D	E	D	E	D	E	D	E	D	E	D	E					D	E						
1/16	IS2	10.2	1.77	2.70	3.22	4.56	7.21	8.53	10.2	12.5	19.1	7.87	7.87	4	2	70	600	450	850	650	1500	750	1800	750		
	IS3	15.3	2.65	4.04	4.83	6.84	10.8	12.8	15.3	18.7							600	450	850	650	1500	750	1800	750		
1/8	IS4	20.4	3.53	5.39	6.45	9.12	14.4	17.1	20.4	25.0	22.2	12.7	11.1	28	7	100	500	350	800	450	1050	750	1150	900		
	IS6	30.6	5.30	8.09	9.67	13.7	21.6	25.6	30.6	37.4							500	350	800	450	1050	750	1150	900		
1/4	IS8	40.8	7.06	10.8	12.9	18.2	28.8	34.1	40.8	49.9	27.0	15.9	14.3	43	11	125	750	450	1000	550	1500	900	1950	1050		
	IS10	51.0	8.83	13.5	16.1	22.8	36.0	42.6	51.0	62.4							750	450	1000	550	1500	900	1950	1050		
3/8	IS12	61.1	10.6	16.2	19.3	27.3	43.2	51.2	61.1	74.9	31.8	19.1	17.5	57	14	150	650	300	900	500	1350	600	1000	600		
	IS14	71.3	12.4	18.9	22.6	31.9	50.4	59.7	71.3	87.4							650	300	900	500	1350	600	1000	600		
	IS16	81.5	14.1	21.6	25.8	36.5	57.7	68.2	81.5	99.9							650	300	900	500	1350	600	1000	600		
1/2	IS20	102	17.7	27.0	32.2	45.6	72.1	85.3	102	125	36.5	22.2	22.2	85	28	200	900	300	1500	700	2100	900	2200	1050		
	IS24	122	21.2	32.4	38.7	54.7	86.5	102	122	150							900	300	1500	700	2100	900	2200	1050		
	IS28	143	24.7	37.7	45.1	63.8	101	119	143	175							900	300	1500	700	2100	900	2200	1050		
3/4	IS32	163	28.2	43.1	51.6	72.9	115	136	163	200	44.5	28.6	28.6	170	43	250	1050	300	1500	500	1650	600	2250	650		
	IS40	204	35.3	53.9	64.5	91.2	144	171	204	250							1050	300	1500	500	1650	600	2250	650		
	IS48	245	42.4	64.7	77.3	109	173	205	245	300							1050	300	1500	500	1650	600	2250	650		
1	IS56	285	49.5	75.5	90.2	128	202	239	285	349	55.6	34.9	34.9	227	57	300	750	450	1200	500	1550	600	2250	950		
	IS64	326	56.5	86.3	103	146	231	273	326	399							750	450	1200	500	1550	600	2250	950		
1 1/4	IS72	367	63.5	97.1	116	164	259	307	367	449	63.5	44.5	44.5	340	85	350	1200	350	1500	450	2200	500	2700	600		
	IS80	408	70.6	108	129	182	288	341	408	499							1200	350	1500	450	2200	500	2700	600		
1 1/2	IS88	448	77.7	119	142	201	317	375	448	549	76.2	50.8	50.8	567	142	400	900	350	1200	450	1800	600	3000	950		
	IS96	489	84.7	129	155	219	346	409	489	599							900	350	1200	450	1800	600	3000	950		
	IS104	530	91.8	140	168	237	375	443	530	649	91.8	140	168	237	375	443	530	649								

$$\text{Flow Rate (l/min)} = K \sqrt{\text{bar}}$$

Standard Materials: Brass, 303 Stainless Steel, 316 Stainless Steel and PVC.

Spray angle performance varies with pressure. Contact BETE for specific data on critical applications.