

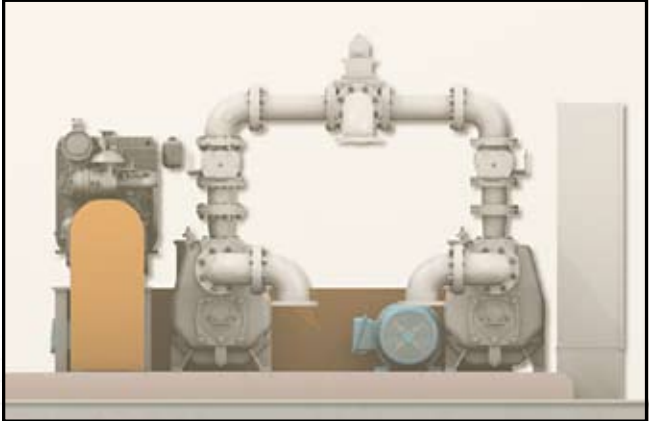


# SEWAGE PUMPING STATIONS

## AUTO-START

Gorman-Rupp's Auto-Start pump stations are pre-engineered units available with Super T Series®, Ultra V Series® and VS pumps with an extensive selection of motors, controls, piping and accessories. Gorman-Rupp has many standard designs for new installations, or custom designs can be provided for existing installations with minimum hookup time.

Auto-Start pump stations are available with 2", 3", 4", 6", 8" or 10" pumps, depending on pump model. For consistently heavy flows, a third or fourth pump may be added. Flows are available to 3400 GPM on single pump operation. For high head/low flow, we offer standard staged designs.



The Gorman-Rupp **Base Mounted Auto-Start** station uses a liquid level control which automatically converts to 12 volt DC and drives the pump with a standby engine providing normal pumping service during power failures. When power resumes, AC motor operation is automatically restored. It meets all standby requirements and uses a variety of fuels.

The Auto-Start unit is a space-saving, modular combination of pump, electric motor and engine, all coupled to the same drive, eliminating the need for an expensive engine/generator set.

## MODULAR ENCLOSURES AVAILABLE FOR YOUR STATION



**BROOKS**  
**JOHN BROOKS COMPANY LIMITED**  
**SPRAYING • PUMPING • FILTERING**  
[www.johnbrooks.ca](http://www.johnbrooks.ca) • 1.877.624.5757

VANCOUVER • CALGARY • EDMONTON • WINNIPEG • TORONTO • MONTREAL

